

Formica® Collection Patterns



MIGUEL ANGEL JIMENEZ VILLARREAL

SALES & PROJECT MANAGER

☎ 812264-2061

☎ 812322-9026

✉ miguel.jimenez@laminadosnacionales.com

🌐 www.laminadosnacionales.com

📘 www.facebook.com/laminadosnacionales

INTERNATIONAL: US Direct +52 1 8123229026



www.formica.com.mx
www.laminadosnacionales.com



The first and original

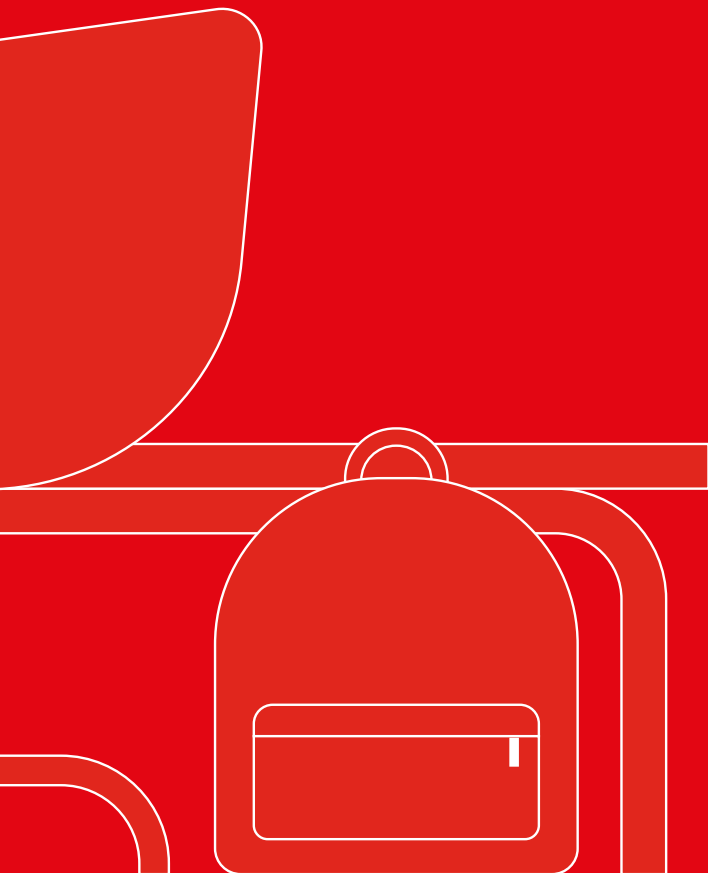
Formica Group invented high pressure laminates in 1913. Pioneers by definition, our iconic Formica® brand represents the quintessence of laminates.

Inspired by life

Laminates entered people's daily lives and made modernity dreams come true and accessible. Similarly, the demand for multifunctional, practical and durable designed surfaces is a constant inspiration for our Formica® Collections. At rest, at leisure, at work.

Evolving with the times

The way people live, work and play continuously changes. Formica Group keep pace with these evolving times through constant innovation, reflecting global trends and responding to ever changing needs and habits. The true original, still surfacing the world.



Patterns

The Formica® Patterns Collection features 86 decors and 10 textures inspired by the simplistic beauty of natural materials, abstract designs and engineered surfaces.



- F9271 Reclaimed Denim Fiber



Redefining pattern through surfaces

Whether you desire a subtle and sophisticated aesthetic or one which boasts expression, each decor is sure to leave a lasting impression on any interior space.

Drawing inspiration from world-renowned luxurious natural stones, timeless terrazzo surfaces, metal effects and classic textiles, the Formica® Patterns Collection will enhance the overall look of your interior through design and texture. Our innovative design process combines reclaimed materials, handcrafted artworks and modern techniques to create surfaces that exude a contemporary and timeless appeal.

Each of the nine design series within the collection tells its own story - redefining pattern through surfaces.



● F5015 Black Painted Marble

● F0193 Xenon



H



• F8382 White Chip



• F7403 Nero Marquina

• F1535 Tornado



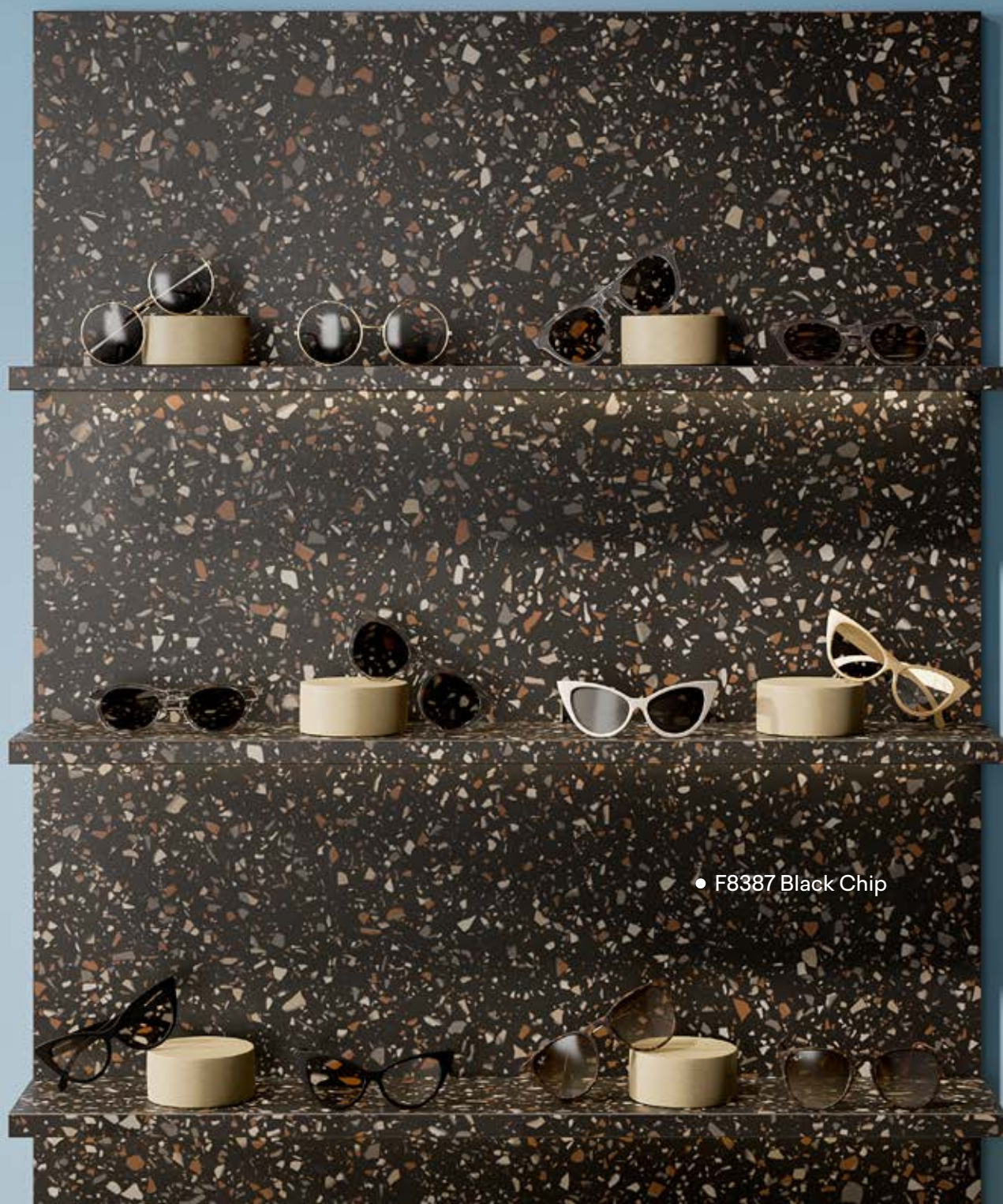
● F8381 Spectra Chip

● F8844 Aged Ash




● F7459 Brite White

SUN




• F8387 Black Chip

A modern office interior featuring a long, blue desk with a built-in shelf above it. The shelf holds a box labeled 'DESIGNING YOUR WORLD' and several books. A corkboard with various papers and a computer monitor is on the left. Two yellow office chairs with silver frames and armrests are positioned at the desk. In the background, another desk with a laptop and a green partition is visible near a large window.

• F4971 Natural Gray Felt

• F8822 Denim





• F8578 Sund Elm

A modern kitchen interior featuring light wood cabinetry and a built-in shelf. The upper cabinets are made of a light-colored wood, while the lower cabinets are covered in a gray felt material. A built-in shelf holds a coffee machine, a black pitcher, and a bowl of snacks. A dark green vertical panel is visible on the right side of the image. In the foreground, a round table holds a cup of coffee and a notebook.

• F4971 Natural Gray Felt





F5782 Formal Walnut •



• F7902 Iron



• F5935 Purbeck Flint

• F8239 Henna

● F8578 Sund Elm

● F8812 Tinted Paper Terrazzo





• F1998 Oslo

• F8813 Tonal Paper Terrazzo



H

F8238 Blush •



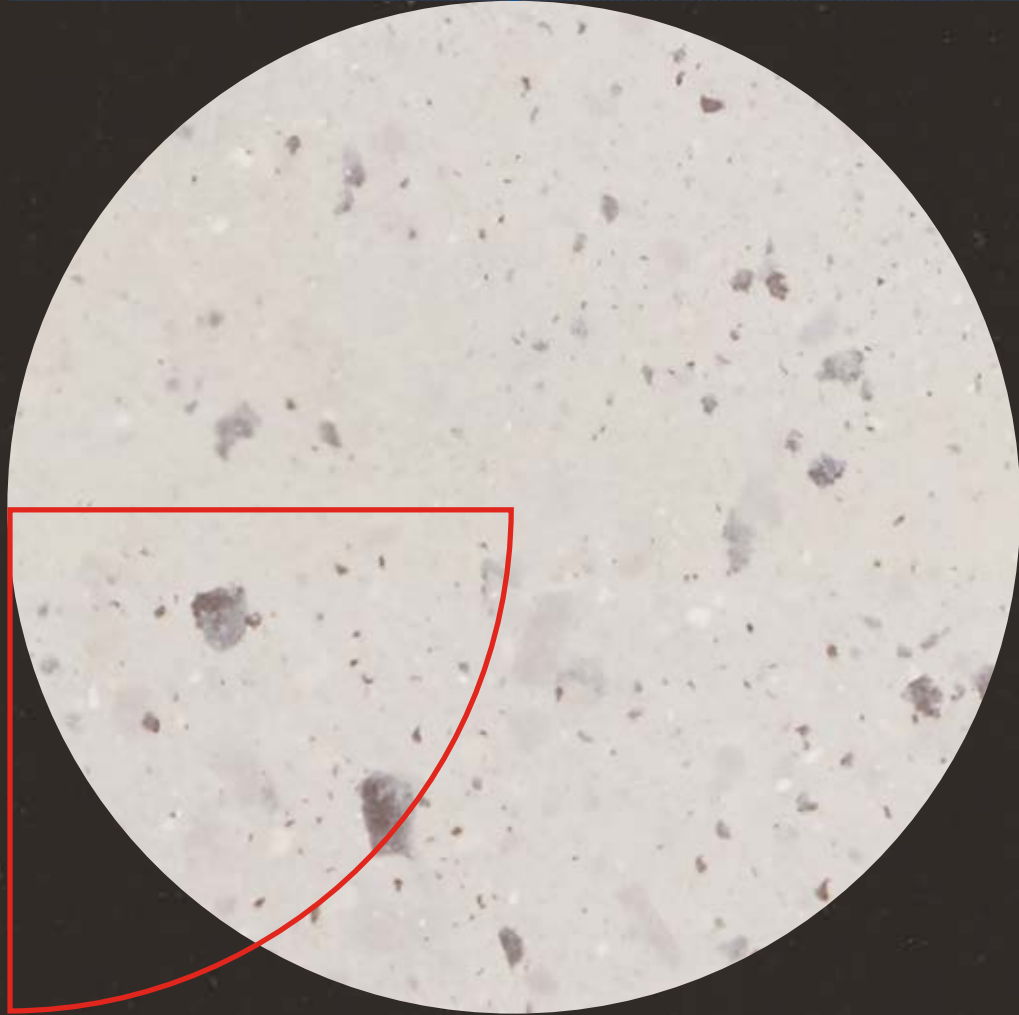
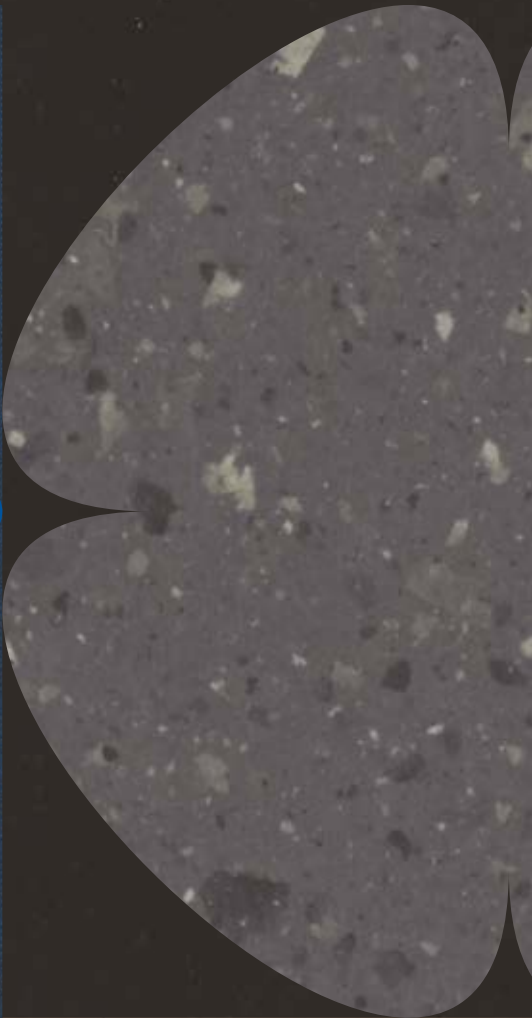
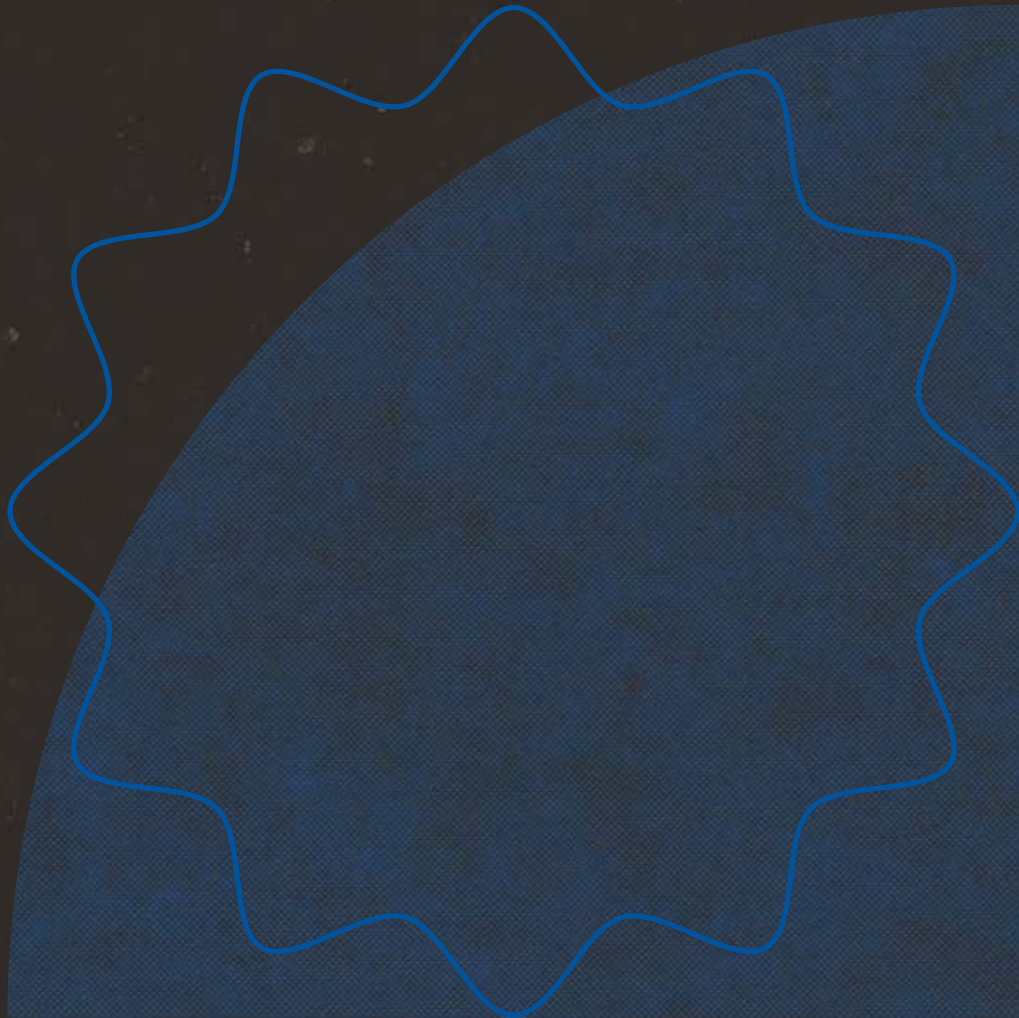
• F5014 White Painted Marble

The COCKTAIL LOUNGE



● F2253 Diamond Black

● F5015 Black Painted Marble





RAW

Reclaimed Beauty

Turning attention to intriguing, trend-led surfaces, the Raw series celebrates the harmony between design and sustainable manufacturing practices.

Each decor within this series delivers an authentic aesthetic through an array of textures, natural hues and sustainably sourced reclaimed and recycled materials. Manufactured in small-batch craft production, each sheet is unique with natural characteristics.

Breathing new life into waste from solid colour decor paper production, trimmed scrap paper is recycled to make unique terrazzo chips and is mixed into paper pulp, to create a new decor paper that utilises reclaimed material as part of the design. **Tinted and Tonal Paper Terrazzo** deliver a timeless, expressive look within the interior landscape, serving as a focal point in any interior space. Respecting the origins of this paper-based product, our new **Paper surface texture** is applied to deliver a raw, handmade feel.

Integrating a sustainable manufacturing process, the decor paper used to create our new **Natural** and **Black Recycled Kraft** decors utilise recycled pulp and natural additives including waste from coffee bean roasting and coffee bean bags.

Organic with an earthy charm, each sheet is one of a kind, showcasing unique highlights of speckles and fibres from its original source. Visually deceiving, the **Recycled Kraft** decor papers have the appearance of paper but due to the properties of high pressure laminate, deliver a highly durable surface performance that is resistant to stains, abrasions and moisture.

Always in fashion, our new **Reclaimed Denim Fiber** decor is innovatively made from waste denim fibres and mixed with recycled cellulose pulp to create an attractive denim decor paper. Each sheet of **Reclaimed Denim Fiber** is unique, due to its natural paper making process.

The RAW series of reclaimed decor papers use small-batch craft production; therefore, each sheet is unique and natural.


● F9271 Reclaimed Denim Fiber





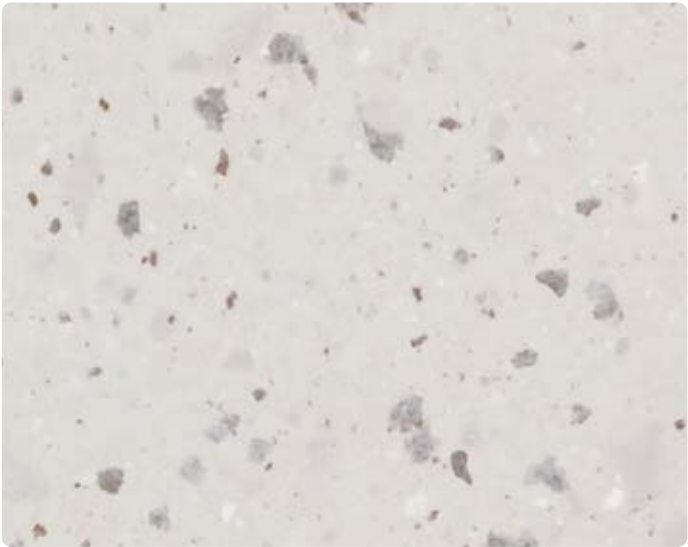
F2962 Clementine •

F1194 Iris •



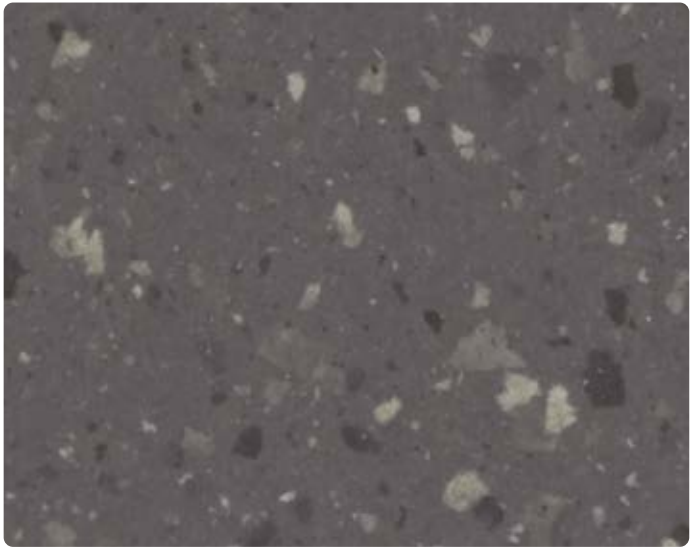
● F3209 Sol

● F9684 Natural Recycled Kraft



F8812
Tinted Paper Terrazzo

Paper



F8813
Tonal Paper Terrazzo

Paper



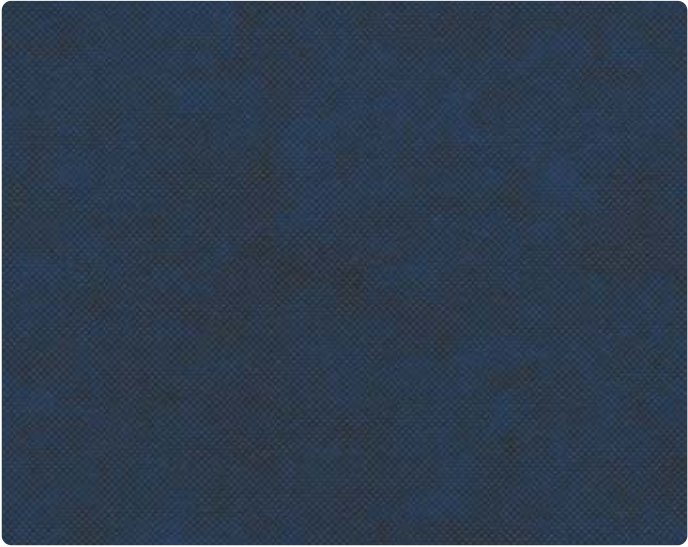
F9684
Natural Recycled Kraft

Essence



F9685
Black Recycled Kraft

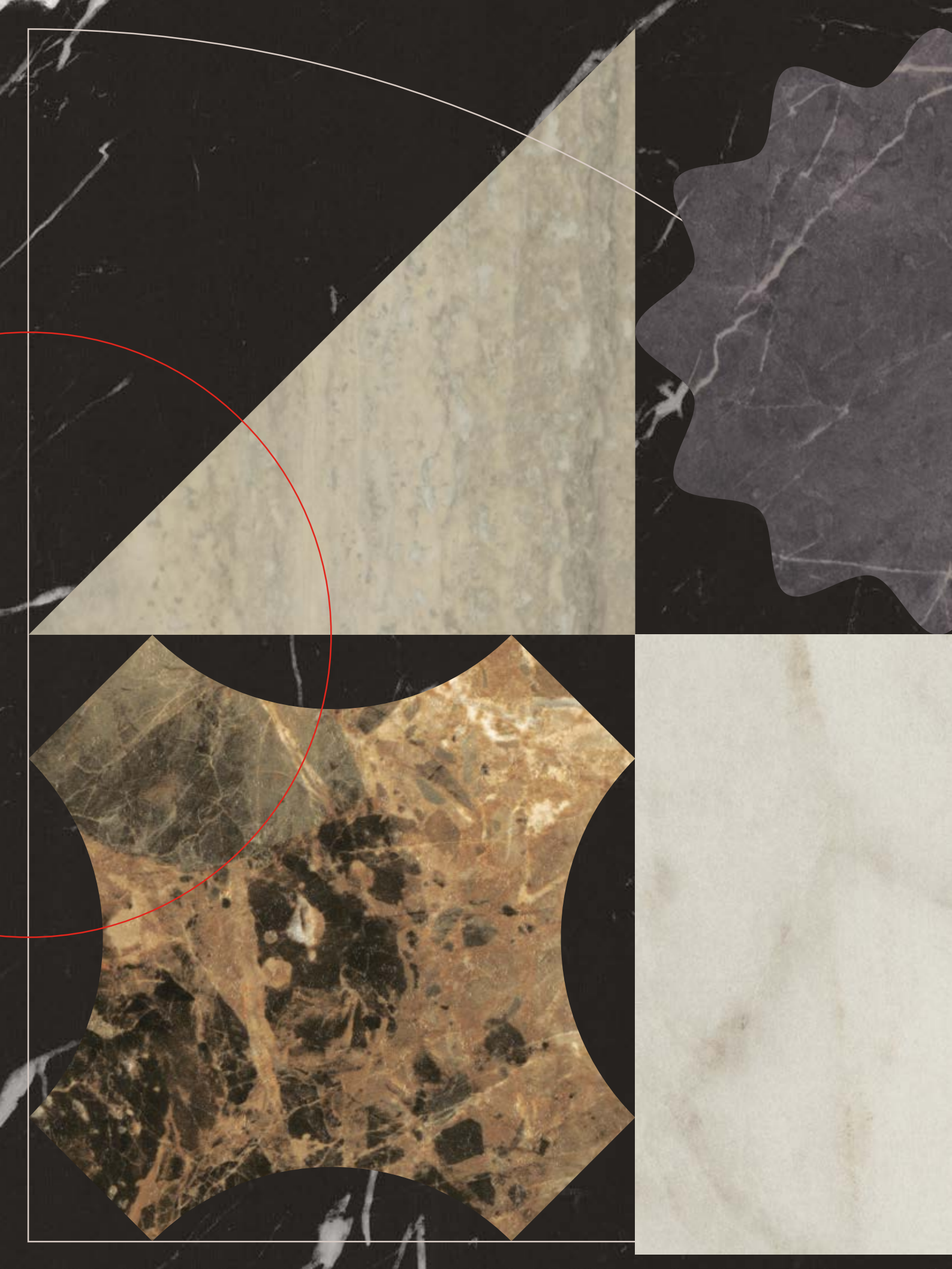
Essence



F9271
Reclaimed Denim Fiber

Plex

The RAW series of reclaimed decor papers use small-batch craft production; therefore, each sheet is unique and natural.





Stones

Majestic Stones

Inspired by the world's most beautiful natural stones, the Stones series connects interiors with stunning marble inspirations, transforming an everyday space into a sanctuary of luxury.

The soft white tones of Calacatta Caldia marble make it one of the most luxurious stones in the world. Our new interpretation, **Calacatta Cava**, marries a soft white background with 'barely there' translucent grey and taupe veins, perfectly reflecting consumers' evolving preferences for comfortable and relaxed interiors, thereby creating an enhanced sense of space.

In dramatic contrast, our new **Nero Marquina** decor offers an inverse aesthetic, boasting a rich black background and striking white veins. The large architectural scale of this design creates drama, through a grand gesture of pattern.

Each new stone introduction is enhanced through their marbled features, creating stylish additions with remarkable distinction. The Stones series captures the majestic essence of the natural world, creating a timeless aesthetic with unlimited creative possibilities to elevate any interior.



The Club
SINCE 1930

● F8243 Night Shade

● F3458 Travertine Silver

H



F3460
Calacatta Marble

AR Plus®



F5018
Calacatta Cava

Satin NDF



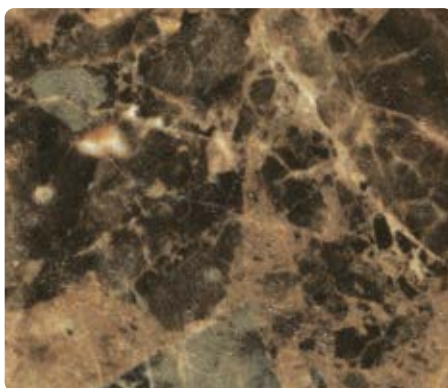
F3421
Bianca Luna

Satin NDF



F3458
Travertine Silver

AR Plus®



F3457
Breccia Paradiso

AR Plus®



F9482
Marbled Cappuccino

AR Plus®



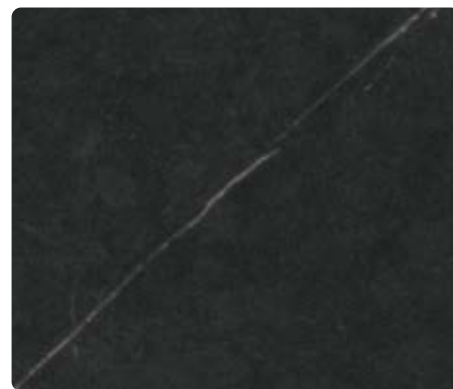
F7402
Pietra Grafite

Satin NDF



F9483
Ferro Grafite

Satin NDF



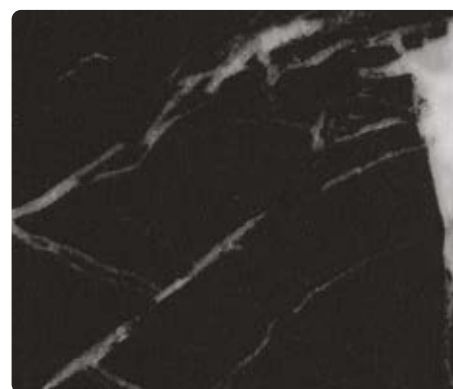
F9485
Nero Grafite

Satin NDF



F3476
Jet Sequoia

AR Plus®



F7403
Nero Marquina

Satin NDF





Engineered

Engineered Style & Functionality

Offering a sleek and modern look, the Engineered series is inspired by materials used throughout the built environment and embraces the variety of colours and patterns that they offer. Perfectly engineered for contemporary interior spaces.

Our new **Chip** decors make a feature palette of the collection, delivering a contemporary twist on classic terrazzo. Developed in collaboration with UK based designer **Olivia Aspinall**, the decors bring a bold and artisanal look, to create spaces that exude energy and expression. With four diverse and versatile colourations, the Chip decors seamlessly combine with the **Formica® Colors Collection**, allowing for a truly integrated design experience.

While concrete and plaster are a mainstay in interior design, our new **Lulworth** and **Purbeck Flint** decors embrace a subtle and sophisticated appearance, compared to what can be a harsh industrial trend.

These calm and mottled decors are adaptable to any colour scheme with low-contrast colour options and warm tones reminiscent of plaster effects. Perfectly complemented with our new **Arcosa texture**, the decors are enhanced with this slightly eroded, grainy and matt surface finish.

Taking inspiration from engineered stones, our new **Neo** decors present an element of tranquillity and harmony to any space. The gentle clouded pattern and colourways allow for versatility and flexibility, making the palette suitable for a wide range of design styles and applications.

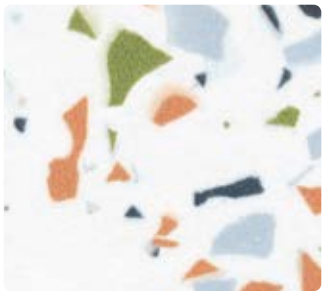
The Engineered series offers a contemporary and sophisticated look to interior surfaces through innovative decors, diverse colourations and complementary design possibilities.

● F8832 Elemental Corten





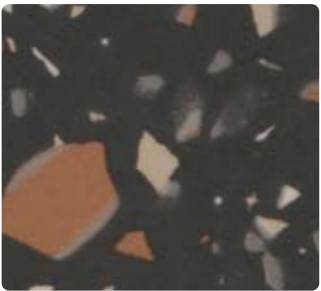
F8382
White Chip Satin NDF



F8381
Spectra Chip Satin NDF



F8372
Grey Chip Satin NDF



F8387
Black Chip Satin NDF



F6363
Elemental Ash Honed



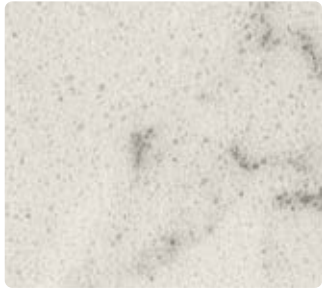
F8830
Elemental Concrete Honed



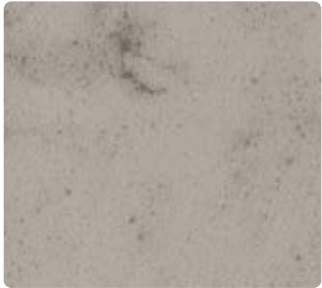
F8833
Elemental Graphite Honed



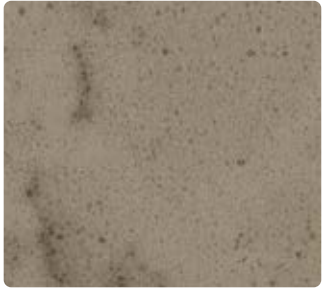
F8832
Elemental Corten Honed



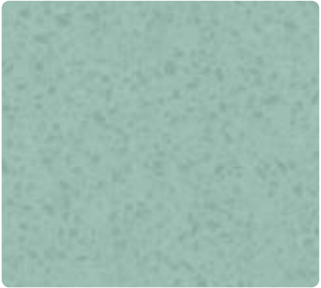
F6314
Neo Cloud Satin NDF



F6316
Neo Tornado Satin NDF



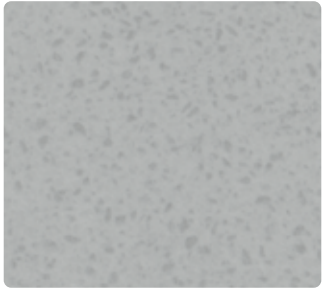
F6315
Neo Cyclone Satin NDF



F6728
Paloma Jade Matte 58



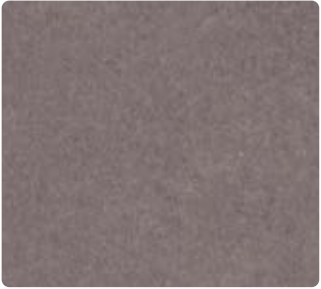
F6698
Paloma Polar Matte 58



F6724
Paloma Folkestone Matte 58



F5936
Lulworth Flint Arcosa



F5935
Purbeck Flint Arcosa



F6362
Concrete Formwood Honed





Monolith

A Fusion of Colour & Texture

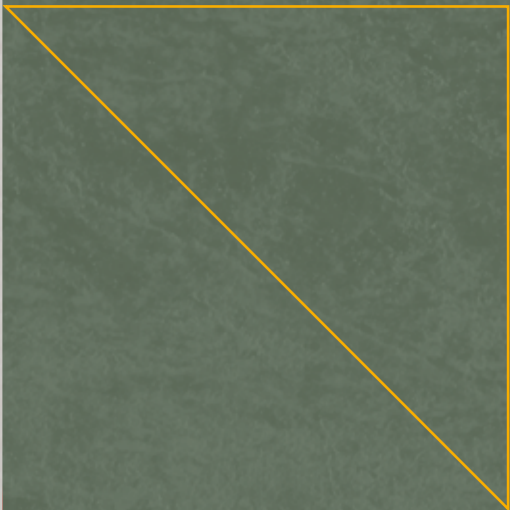
Inspired by the geological aesthetics of natural stone, combined with manmade marks, our new **Monolith texture** delivers an impressive appearance that's imposing, ageless and endlessly versatile.

Presented in a selection of design-led solid colours, the **Monolith texture** boasts a dramatic surface pattern with its large-scale, distinctive stone-like design.

Expertly crafted to capture the most striking elements from two natural stones, the unique texture offers the hybrid

characteristics of stone, concrete and even leather depending on the colour and environment it is presented on. The perfect fusion of colour and texture accentuates various gloss levels across the surface, as if carved or excavated from the base material.

With its commanding presence, the **Monolith** series can be used to create bold architectural features on walls, columns, or large pieces of furniture, adding a long established and solid feel to any space.





● F5489 Espresso Pear

● F6349 Frosted Pearl

● F8793 Green Slate Monolith

MO
WO
HOTEL



MO
WO
HOTEL





F2255
Polar White Monolith



F7923
Surf Monolith



F7927
Folkestone Monolith



F1994
Fox Monolith



F7837
Graphite Monolith



F8793
Green Slate Monolith





Frosted

Lustrous Elegance

Introducing the opulent Frosted series of pearlescent high pressure laminates.

Our latest introduction is inspired by the shimmering beauty of seawater pearls and the delicate sheen of satin materials. The new **Frosted Pearl** decor will transform an interior ambience into a realm of elegance.

The carefully curated palette ranging from creamy white tones to trend-led burnished colours bring a sense of lustre to an interior space. With its stunning palette including warmer notes of gold and copper, the collection seamlessly combines metallic inspirations with pearlescent aesthetics, blending luxury and elegance.

The Frosted series harmoniously offers versatility and sophistication to the collection.



● F5489 Espresso Pear

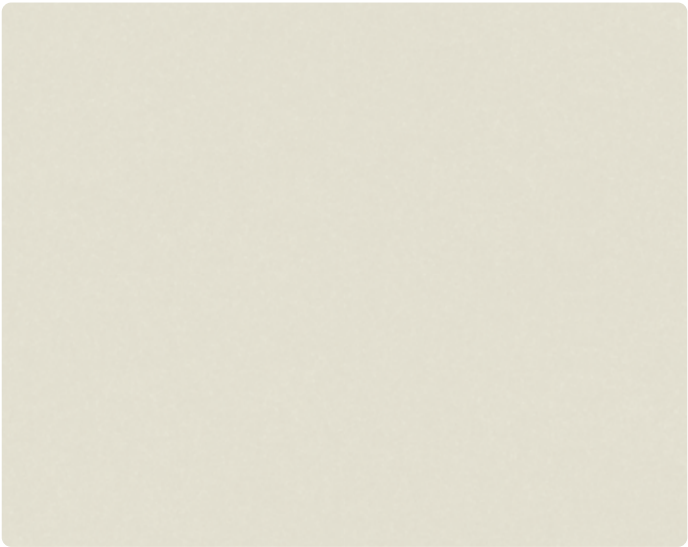
● F6349 Frosted Pearl

GROUND FLOOR

< ROOMS 0-9

< RESTAURANT

● F8793 Green Slate Monolith



F6349
Frosted Pearl

Gloss



F6350
Frosted Dusk

Gloss



F6352
Frosted Gold

Gloss



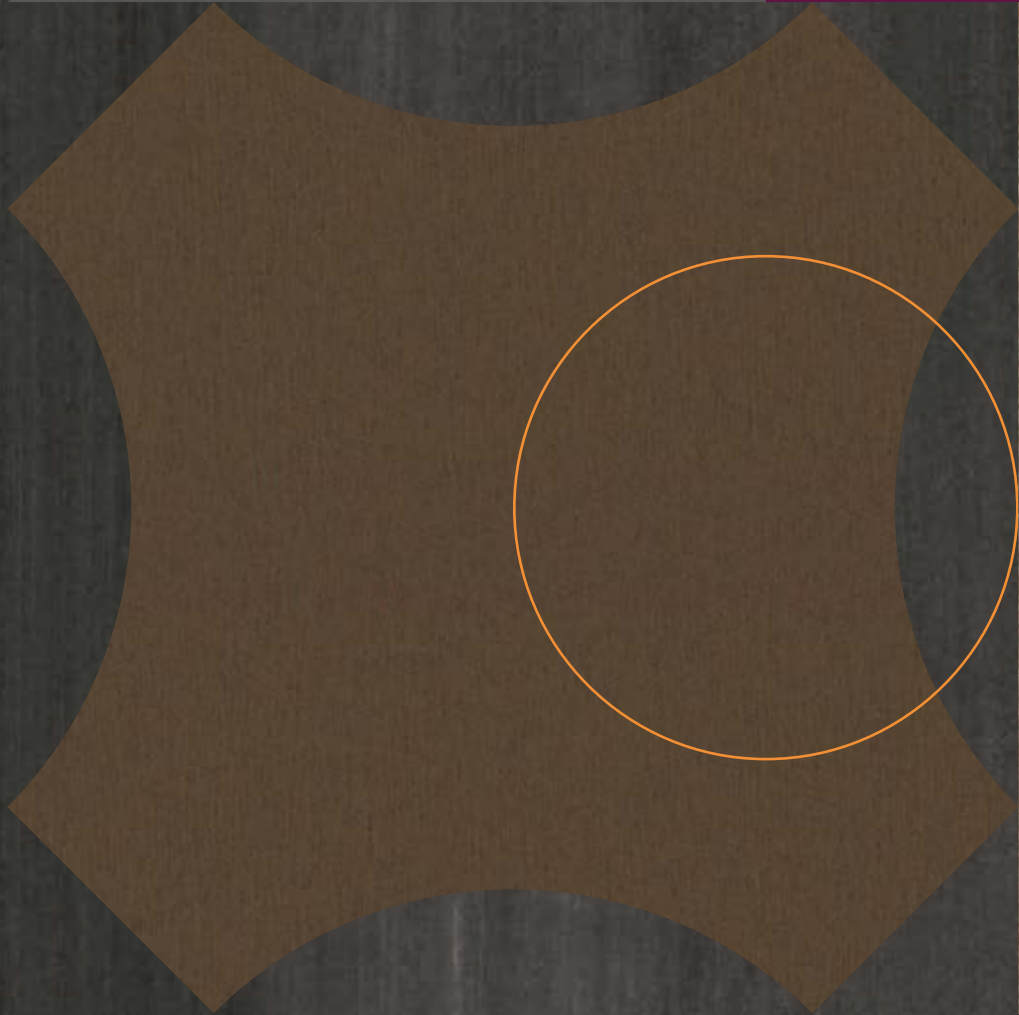
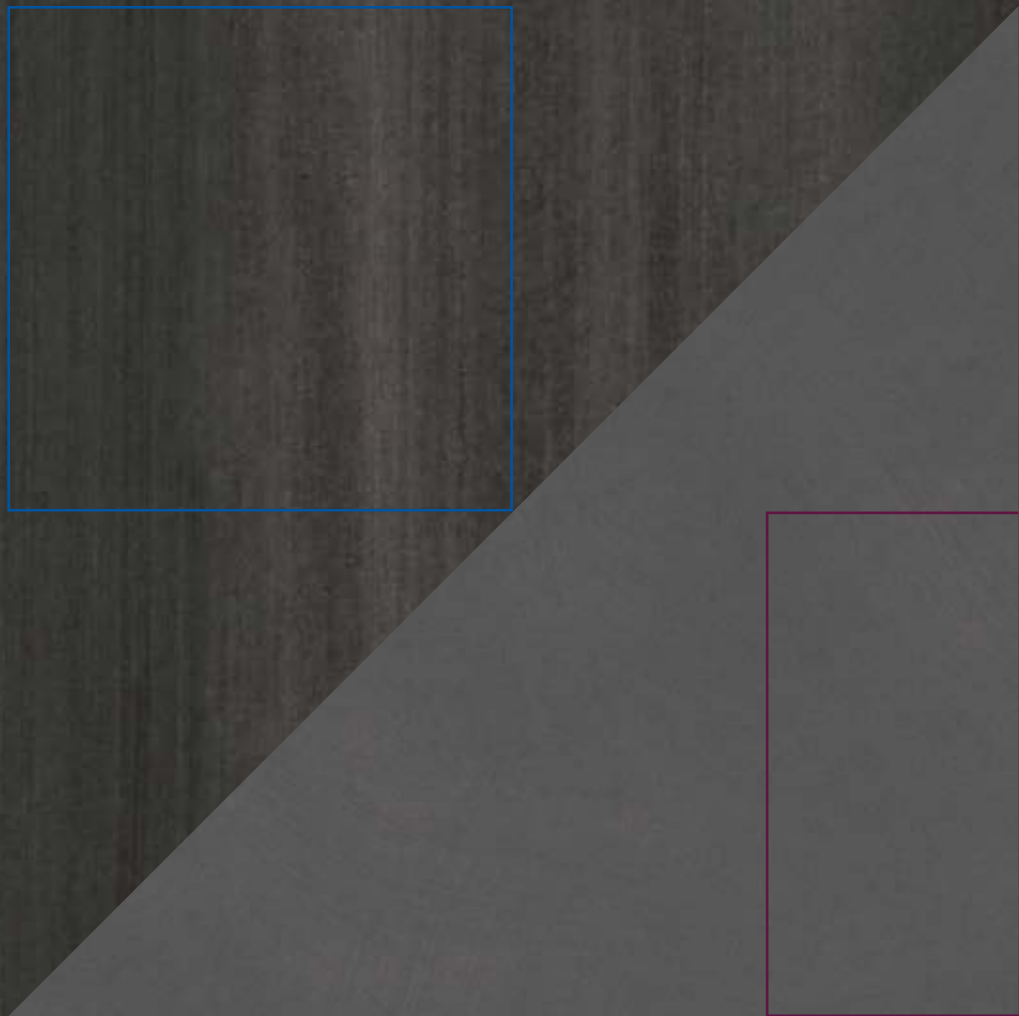
F6351
Frosted Copper

Gloss



F6353
Frosted Jade

Gloss





Metal Effects

Industrial Chic

Providing unquestionable appeal, the Metal Effects series takes inspiration from metals and materials with metallic finishes, adding an industrial touch to modern-day living.

Our new **Rolled** and **Blackened Steel** decors are based on a sheet of rolled steel, recoloured in cool dyed hues of blues and greys to give a contemporary twist and a more abstract appearance that has the look of metal, wood or even a large-scale linear graphic pattern.

Drawing inspiration from rustic patina effects, our new **Burnished Coin** and **Iron** decors feature an aesthetic of worn and rusted metal, hints of blue combined with warm metal tones display a seamless combination of past and present. The Burnished decors provide a beautiful balance of tone, allowing each to work alongside a diverse spectrum of colour.

Expanding our popular **Brushed** decor palette, warmer tones of aged bronze and copper have been added to the collection creating a dynamic, stylish palette that will be sure to make a statement.





• F3708 Burnished Coin

DUTTON
HOUSE

F3	Cellarola Rooms 8 - 10 Conference room
F2	Rooms 4 - 7 Restroom
F1	Rooms 1 - 3 Hall

• F5374 Elegant Oak

• F8837 Brushed Zinc





F0193
Xenon
Matte 58



F8837
Brushed Zinc
Matte 58



F8859
Vintage Brush
Matte 58



F3735
Krypton
Matte 58



F3734
Radon
Matte 58



F7108
Saturn Brush
Matte 58



F7106
Oxide Brush
Matte 58



F7107
Comet Brush
Matte 58



F3708
Burnished Coin
Arcosa



F3709
Burnished Iron
Arcosa



F8917
Rolled Steel
Matte 58



F8918
Blackened Steel
Matte 58



F5583
Steel Metal
Matte 58





Textiles

Classic Luxury with Modern Functionality

Textiles and fabrics are used extensively throughout building interiors, typically as soft furnishings to add warmth, tactility and to introduce pattern. The new Textile series extends the possibilities of where these looks can be used, with enhanced performance and functionality. Offering the appearance of textile materials, encapsulated in highly durable laminate, each decor is suitable for high traffic applications on tables, walls and furniture, blending classic luxury with modern functionality.

Turning attention to sophisticated fabrics typically seen in classic fashion garments, woven material inspired designs feature a multidirectional new **Flint Plaid** decor alongside a variety of neutral fabric tones. With monochrome linen weaves available in three complementary Textile decors, the palette effortlessly exudes understated sophistication. Breaking the boundaries of woven material, these classic and

structured textile designs are the perfect choice for environments where fabrics would not normally be practical.

Much like warp and weft yarns, our new **Cotton** and **Woolen Cloth** decors mirror the evolving classic of a woven twill. Each design showcases complex weaving through intricately detailed patterns that harmonise perfectly with the Woven palettes' bolder style.

With our highly adaptable but visually authentic new **Natural Gray Felt** decor, the office industry's ever popular felt material has undergone a revolutionary upgrade. The soft aesthetic of felt can now become a reality on a wider variety of vertical and horizontal applications.

No matter what the environment, the Textile series will turn design ideas into a reality, creating visual drama through material-inspired decors.

• F2770 Sarum Grey

• F9535 Flint Plaid



flint



● F8581 Quercus Marron



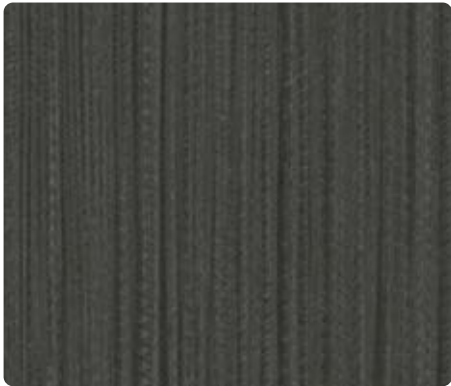
- F4971 Natural Gray Felt



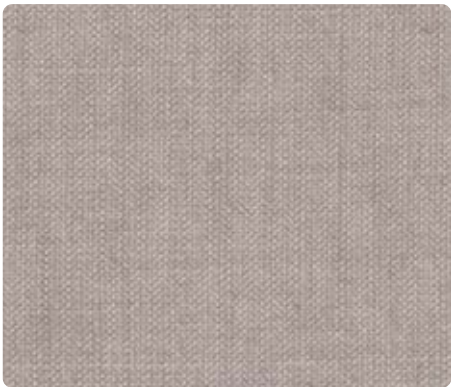
F8826
Neutral Twill Plex



F8827
Sarum Twill Plex/Matte 58



F8829
Graphite Twill Plex



F6445
Greige Textile Plex



F6444
Clay Textile Plex



F6446
Charcoal Textile Plex



F8682
Woolen Cloth Plex



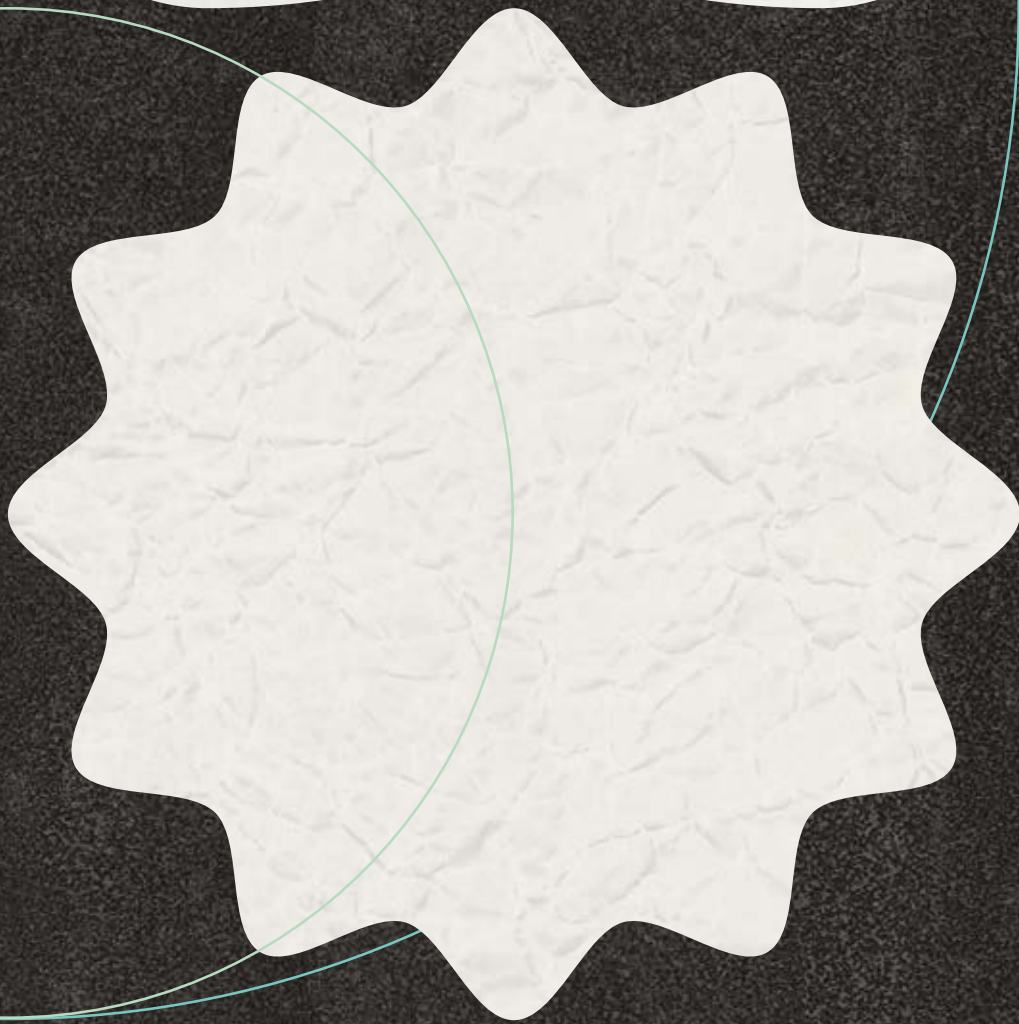
F8681
Cotton Cloth Plex



F4971
Natural Gray Felt Paper



F9535
Flint Plaid Plex



The background is a dark, textured surface. On the left, there is a large, light-colored, organic shape that resembles a splash or a piece of paper. A thin, curved line in a light green or teal color arches across the upper half of the image. In the bottom right corner, there is a yellow geometric shape consisting of a triangle and a rectangle.

Abstracts

Hand Crafted Elegance

Inspired by the natural world, but 100% Formica® brand original artworks, the Abstract series decors have been exclusively hand-designed.

Connecting with ancient architectural techniques, our new **Layered Sand** and **Layered Black Sand** decors beautifully capture the truly unique natural elegance of sand through mesmerising artistic patterns. A large-scale rammed earth inspired design, the Layered Sands present an organic visual appeal that can create a calming and peaceful interior environment.

Our new **Black** and **White Painted Marble** decors add a special touch to the series. These designs were hand painted by a commissioned artist and embody the art of marbling. Water and ink are mixed resulting in a beautiful and sophisticated watercolour design.

The Painted Marble decors give a fluid and abstract appearance reminiscent of natural stones, but also highlight the unique craftsmanship involved in their creation.

Paying tribute to laminate as a paper-based material, our new **Starched Paperfold** decor takes the concept of beauty in imperfection to new levels. Crushed paper has been carefully unfolded to reveal organic and abstract fold marks. In addition to its aesthetic of paper, the design provides a hybrid quality with a structure resembling that of a simple marble pattern. New to the collection, **Paper texture** has been expertly combined to add the perfect finishing touch.

The Abstract series is sure to captivate the senses and will leave an original and lasting impression to an interior space.

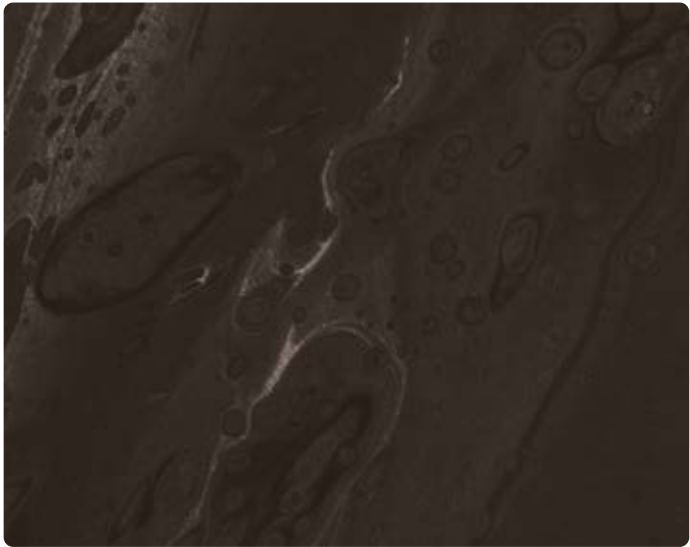


• F9511 Layered Sand



F5014
White Painted Marble

Satin NDF



F5015
Black Painted Marble

Satin NDF



F9511
Layered Sand

Arcosa



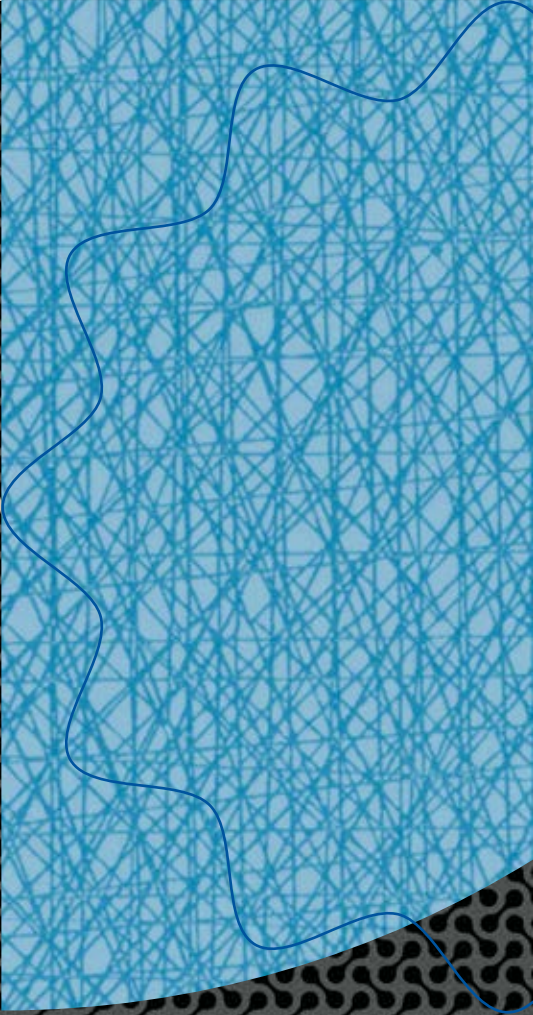
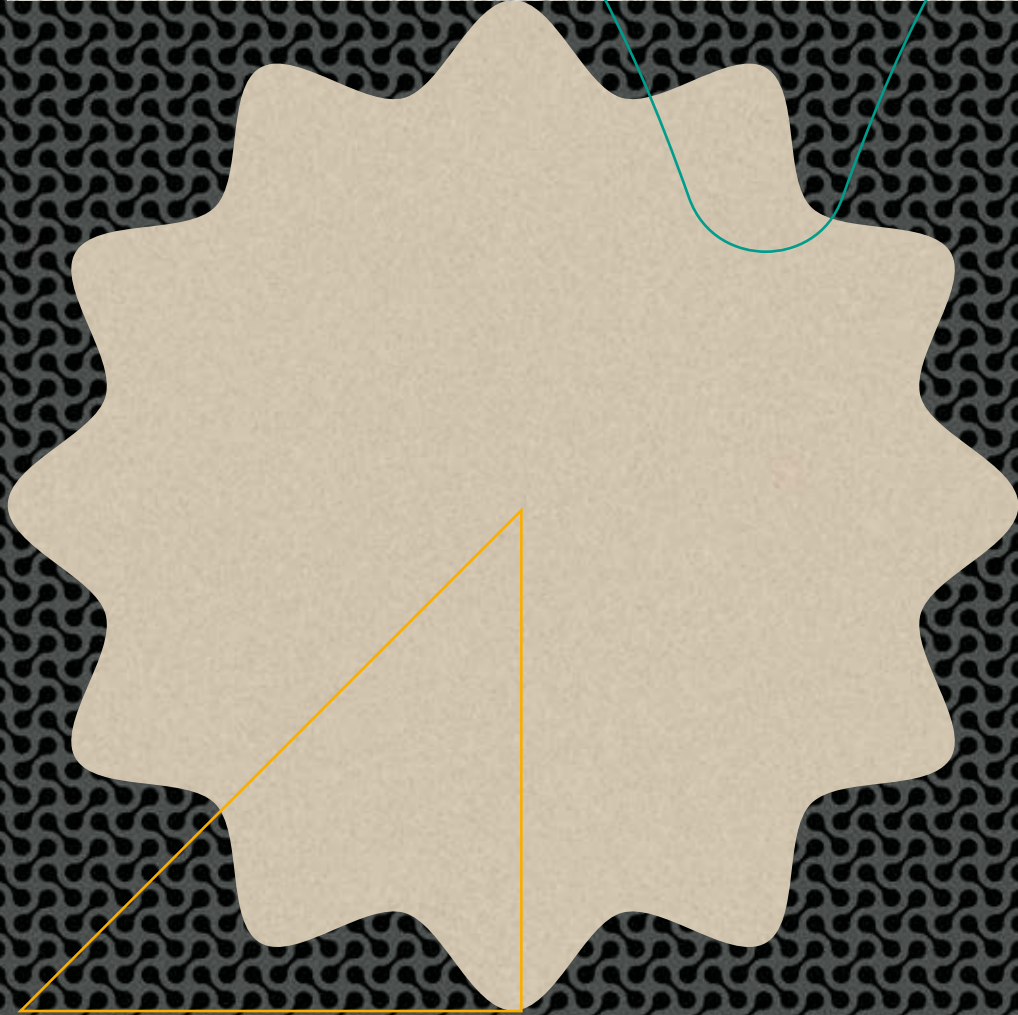
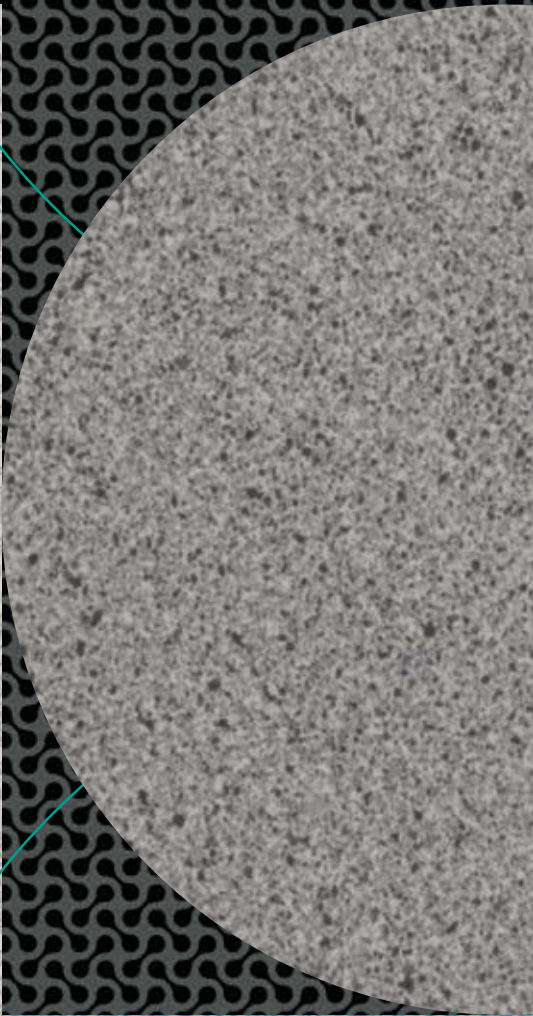
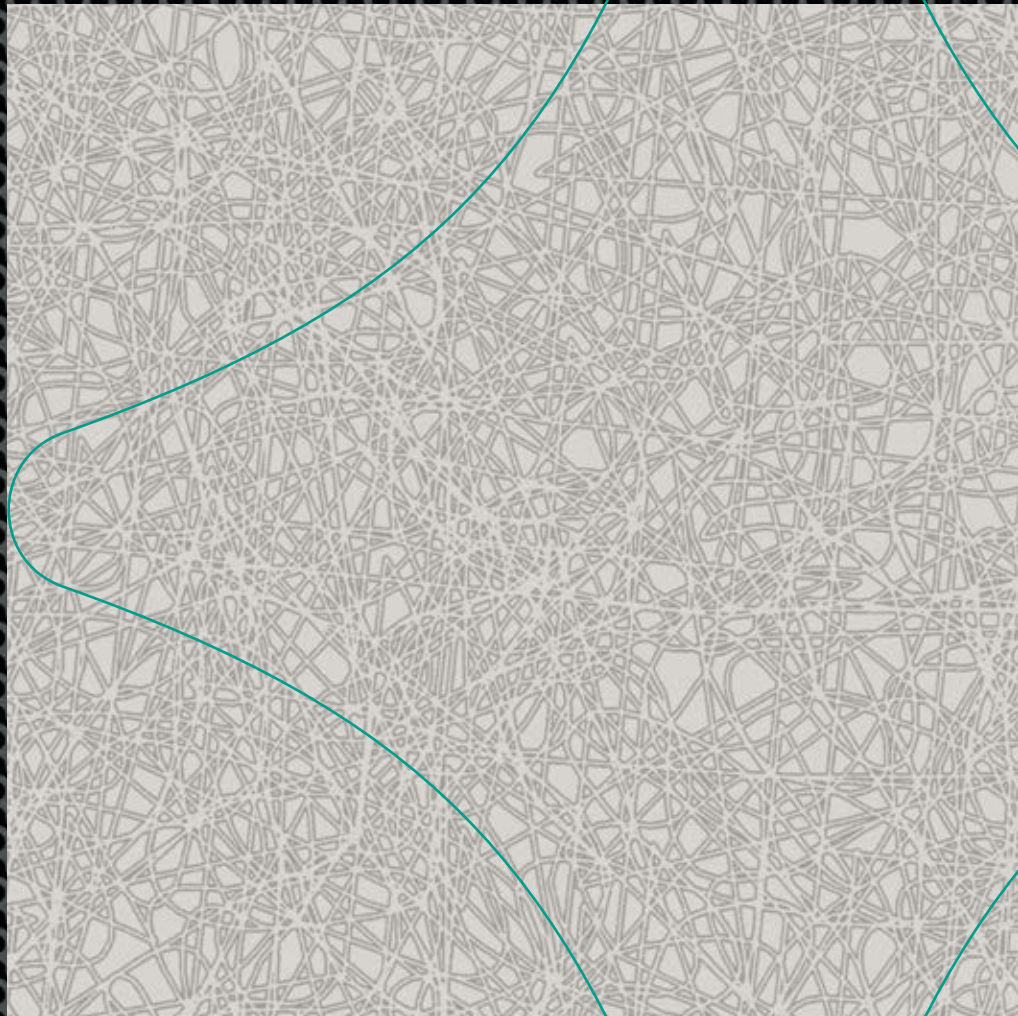
F9510
Layered Black Sand

Arcosa



F8678
Starched Paperfold

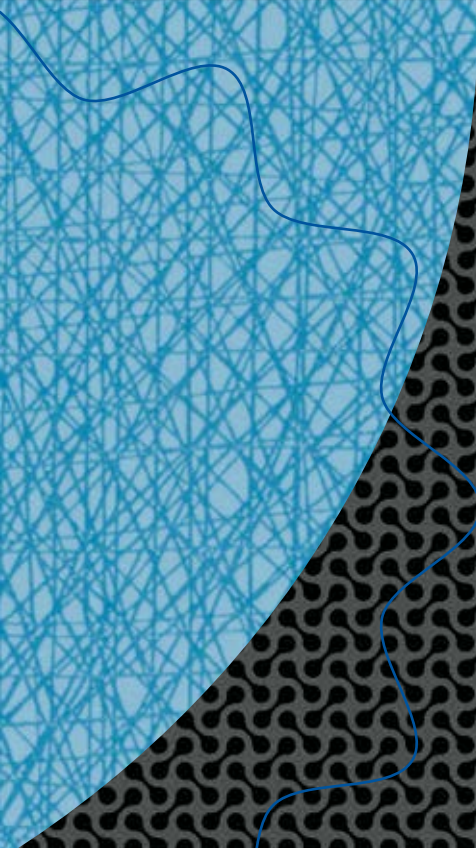
Paper





Geo-optics

Bold Graphic Patterns & Optical Solids

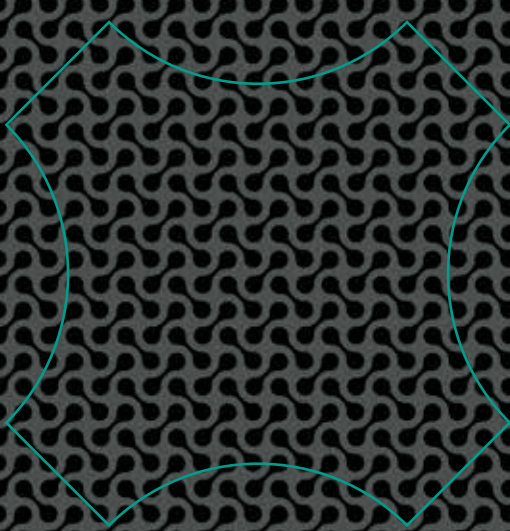


Inspired by intricate patterns and abstract shapes, the Geo-optics series celebrates the Formica® brand heritage for bold graphic pattern.

Designs within the series have been carefully curated, featuring micro-scale patterns that combine retro themes with the modern flair of abstract art.

From a vivid pop of colour to muted tones, the Geo-optic series offers an adaptable palette to bring just the right balance to an interior.

The Geo-optic series is the perfect range to create an eye-catching focal point through geometric shapes and pattern.





● F6944 VirrVarr Blue

● F6945 VirrVarr Black

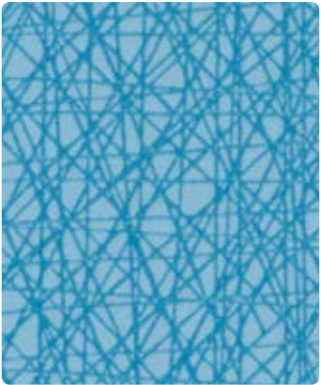
● F6943 VirrVarr White



F6943
VirrVarr White Matte 58



F6945
VirrVarr Black Matte 58



F6944
VirrVarr Blue Matte 58



F5281
Dogbone White Matte 58



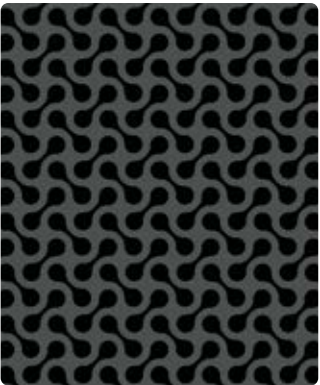
F5270
Geo White Matte 58



F5272
Geo Folkestone Matte 58



F5273
Geo Citadel Matte 58



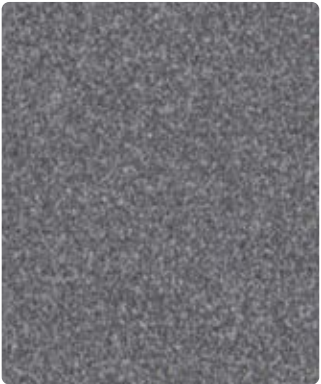
F5283
Dogbone Storm Matte 58



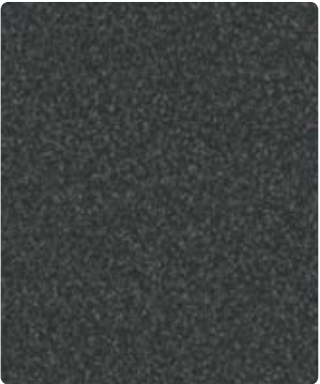
F7507
Folkestone Grafix Matte 58



F7517
Almond Grafix Matte 58



F7508
Mouse Grafix Matte 58



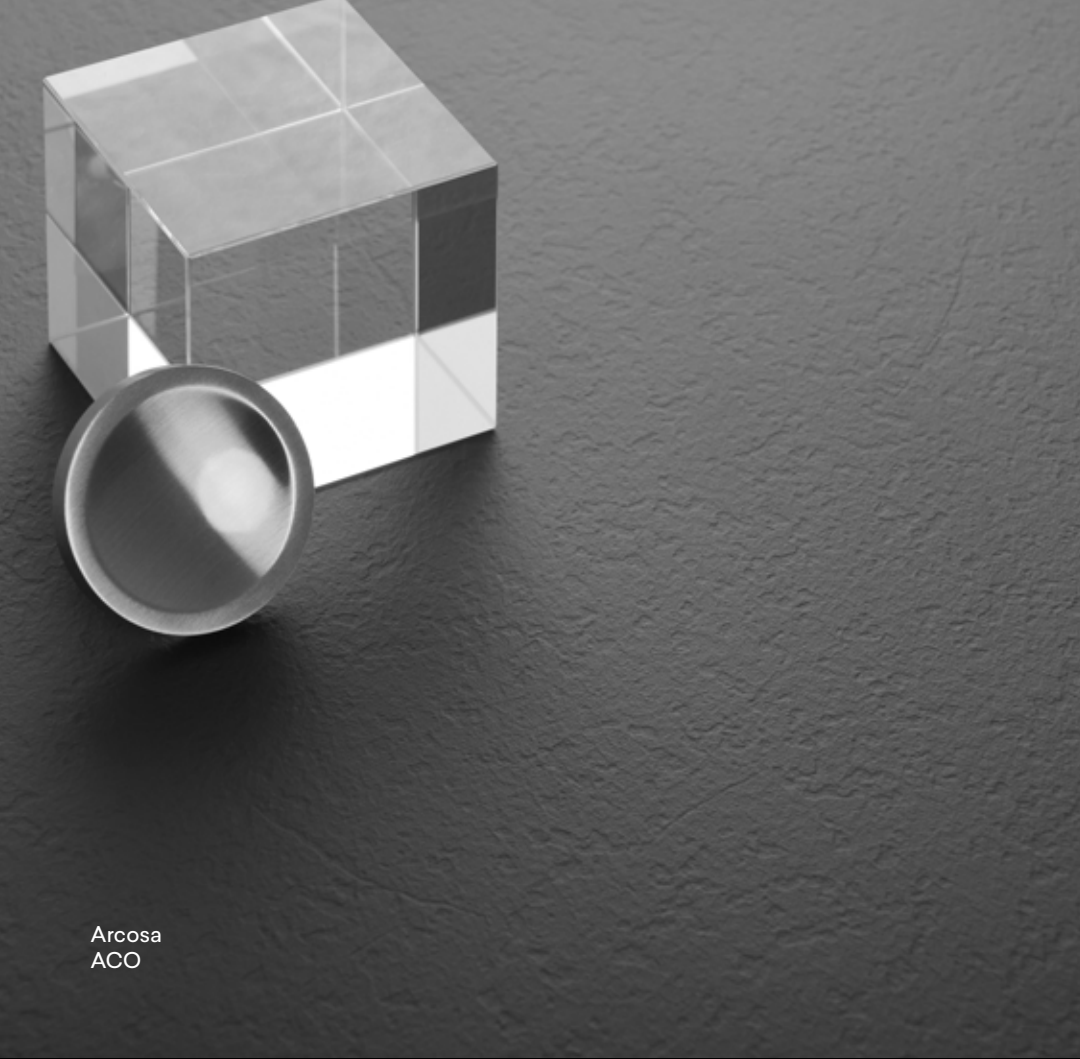
F7515
Graphite Grafix Matte 58



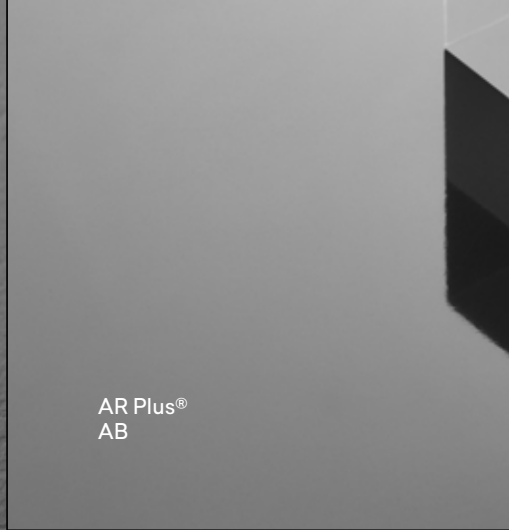
F1936
Lava Dust Matte 58



F1787
Grey Dust Matte 58



Arcosa
ACO



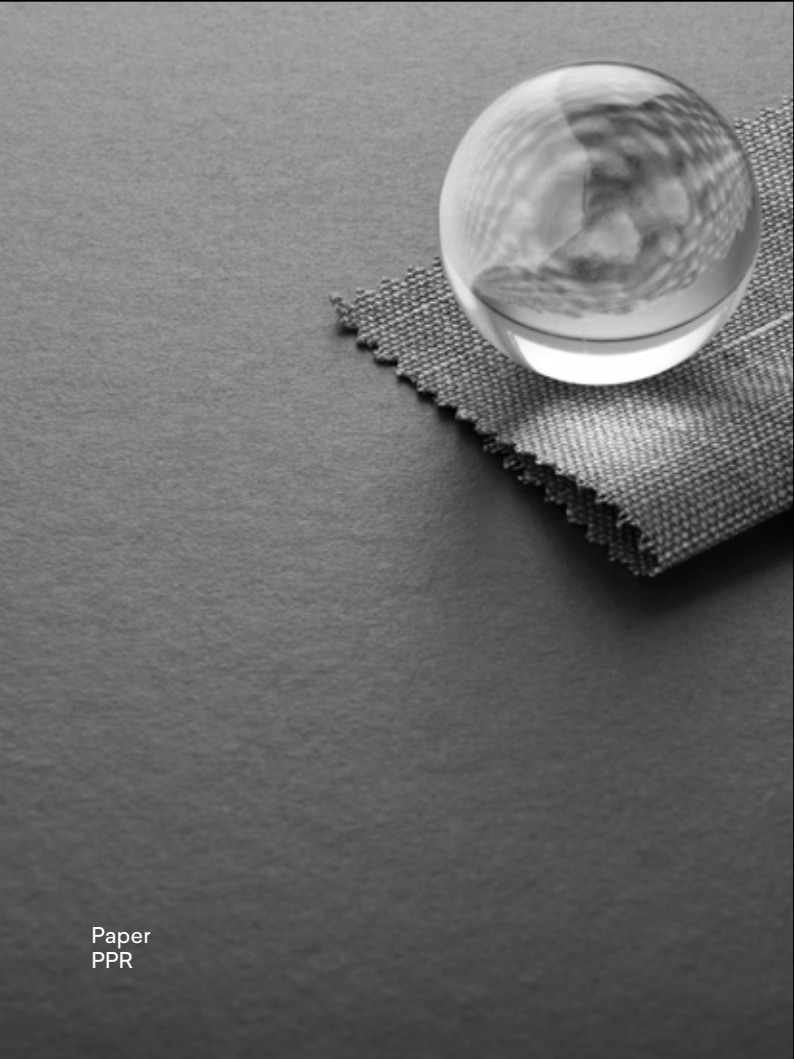
AR Plus®
AB



Gloss
GLS



Matte 58
MAT



Paper
PPR



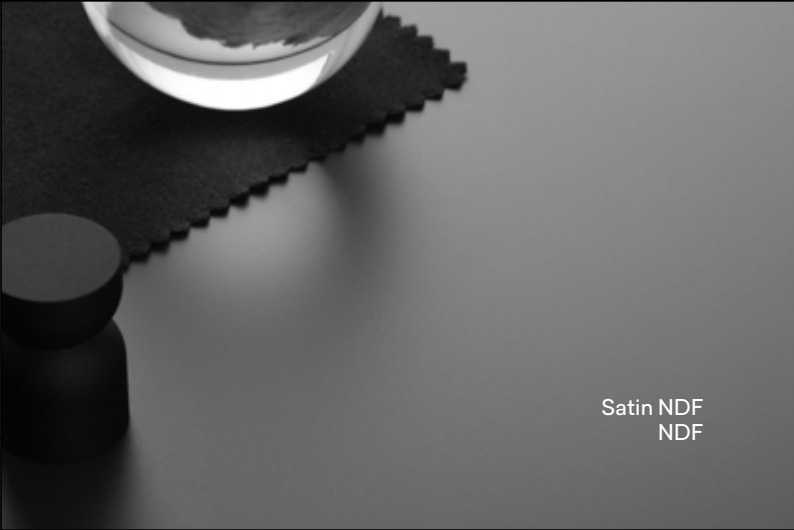
Essence
ESC



Monolith
MON



Plex
PLX



Satin NDF
NDF



Honed
AHD

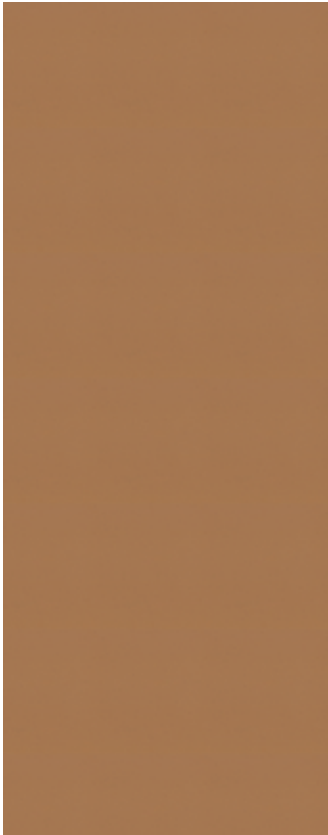
Full sheet layouts



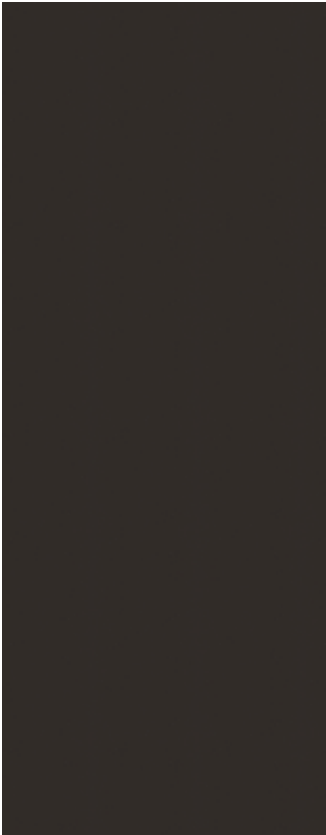
F8812
Tinted Paper Terrazzo PPR



F8813
Tonal Paper Terrazzo PPR



F9684
Natural Recycled Kraft ESC



F9685
Black Recycled Kraft ESC



F9271
Reclaimed Denim Fiber PLX



F3460
Calacatta Marble AB



F5018
Calacatta Cava NDF



F3421
Bianca Luna NDF

Full sheet layouts displayed are shown at approx 1:28 scale and are representative of a 3050x1300mm sheet size



F3458
Travertine Silver

AB



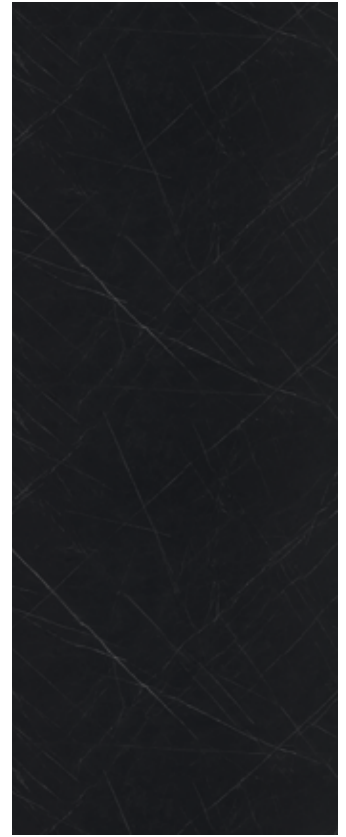
F7402
Pietra Grafite

NDF



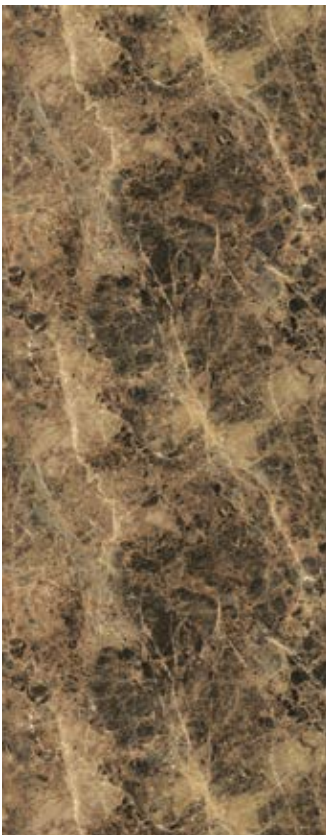
F9483
Ferro Grafite

NDF



F9485
Nero Grafite

NDF



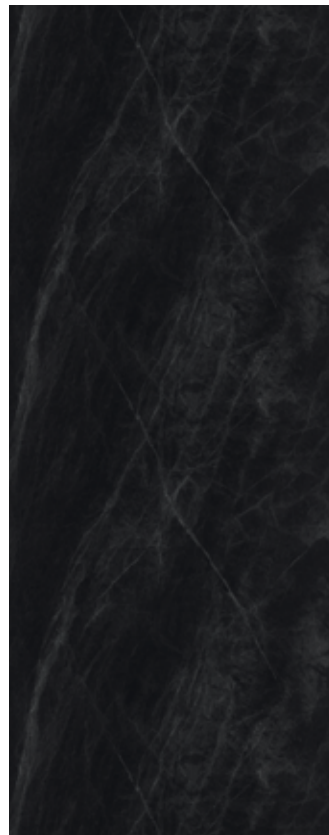
F3457
Breccia Paradiso

AB



F9482
Marbled Cappuccino

AB



F3476
Jet Sequoia

AB



F7403
Nero Marquina

NDF

Full sheet layouts



F8381
Spectra Chip NDF



F8382
White Chip NDF



F8372
Grey Chip NDF



F8387
Black Chip NDF



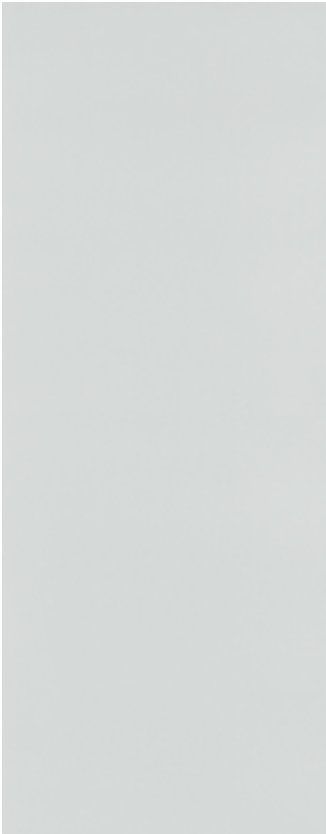
F6314
Neo Cloud NDF



F6316
Neo Tornado NDF



F6315
Neo Cyclone NDF



F6698
Paloma Polar MAT

Full sheet layouts displayed are shown at approx 1:28 scale and are representative of a 3050x1300mm sheet size



F6724
Paloma Folkestone MAT



F6728
Paloma Jade MAT



F6363
Elemental Ash AHD



F8830
Elemental Concrete AHD



F8833
Elemental Graphite AHD



F8832
Elemental Corten AHD



F5936
Lulworth Flint ACO



F5935
Purbeck Flint ACO

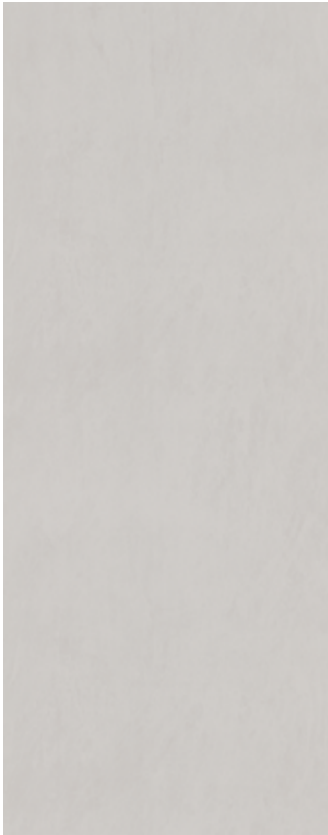
Full sheet layouts



F6362
Concrete Formwood AHD



F2255
Polar White Monolith MON



F7927
Folkestone Monolith MON



F7837
Graphite Monolith MON



F7923
Surf Monolith MON



F1994
Fox Monolith MON

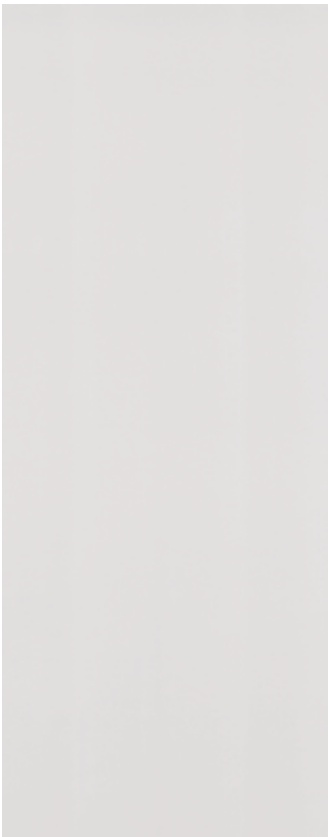


F8793
Green Slate Monolith MON



F6353
Frosted Jade GLS

Full sheet layouts displayed are shown at approx 1:28 scale and are representative of a 3050x1300mm sheet size



F6350
Frosted Dusk GLS



F6349
Frosted Pearl GLS



F6352
Frosted Gold GLS



F6351
Frosted Copper GLS



F3708
Burnished Coin ACO



F3709
Burnished Iron ACO



F8917
Rolled Steel MAT



F8918
Blackened Steel MAT

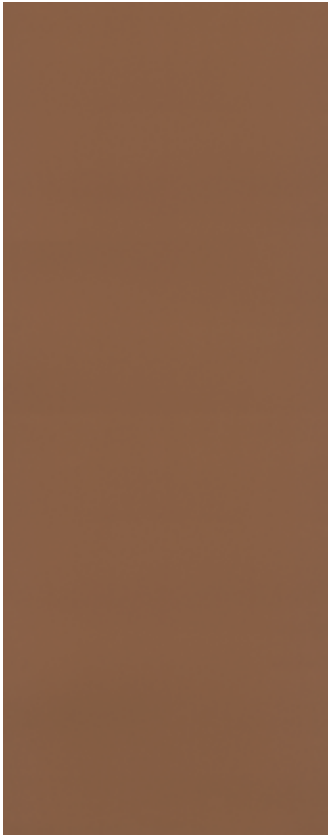
Full sheet layouts



F7108
Saturn Brush MAT



F7106
Oxide Brush MAT



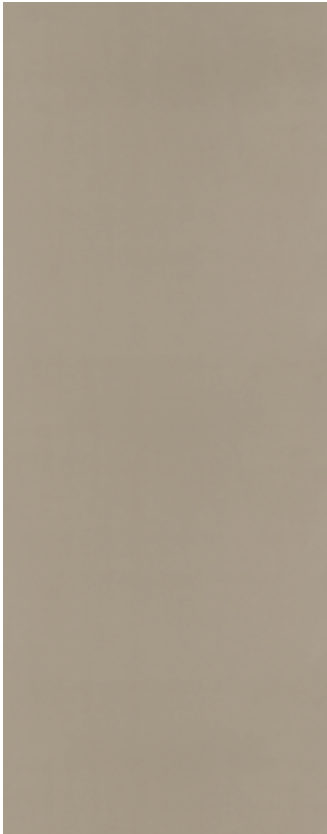
F7107
Comet Brush MAT



F0193
Xenon MAT



F8837
Brushed Zinc MAT



F8859
Vintage Brush MAT

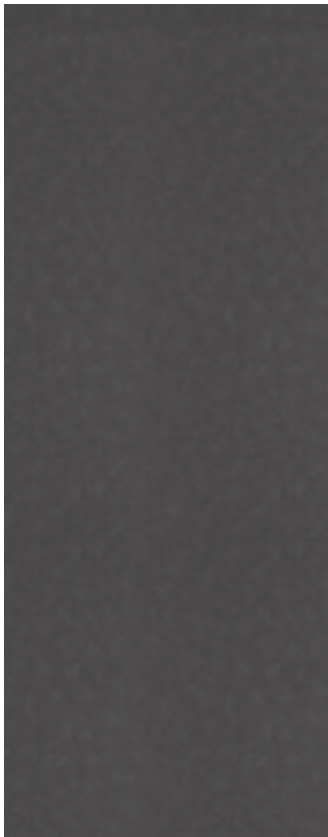


F3735
Krypton MAT



F3734
Radon MAT

Full sheet layouts displayed are shown at approx 1:28 scale and are representative of a 3050x1300mm sheet size



F5583
Steel Metal MAT



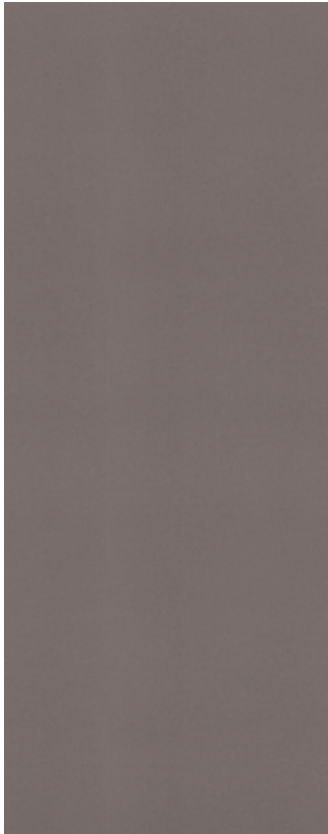
F9535
Flint Plaid PLX



F6445
Greige Textile PLX



F6444
Clay Textile PLX



F6446
Charcoal Textile PLX



F8826
Neutral Twill PLX



F8827
Sarum Twill PLX/MAT

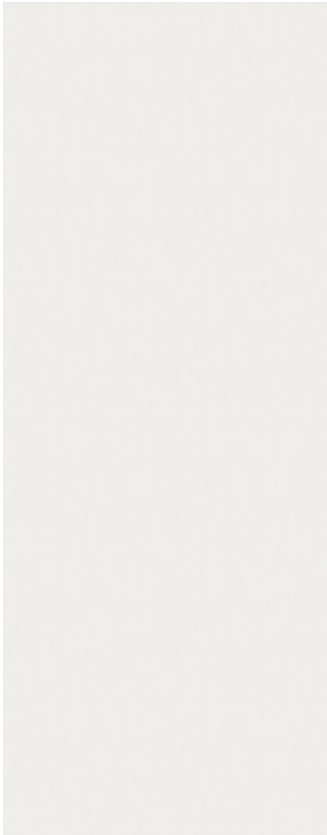


F8829
Graphite Twill PLX

Full sheet layouts



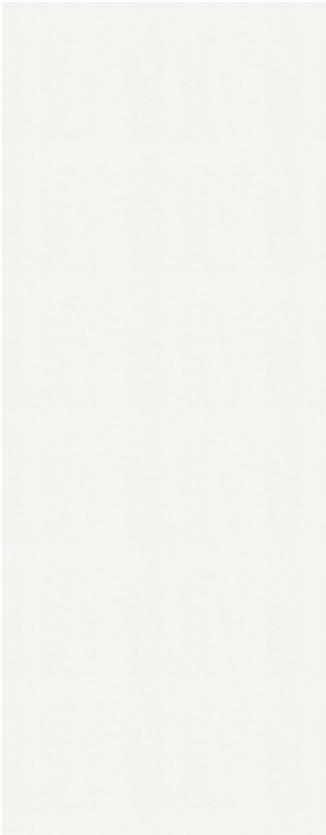
F8682
Woolen Cloth PLX



F8681
Cotton Cloth PLX



F4971
Natural Gray Felt PPR



F8678
Starched Paperfold PPR



F5014
White Painted Marble NDF



F5015
Black Painted Marble NDF

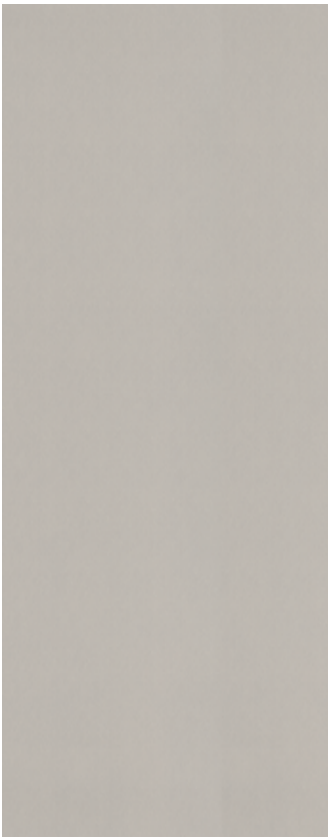


F9511
Layered Sand ACO



F9510
Layered Black Sand ACO

Full sheet layouts displayed are shown at approx 1:28 scale and are representative of a 3050x1300mm sheet size



F6943
VirrVarr White

MAT



F6945
VirrVarr Black

MAT



F6944
VirrVarr Blue

MAT



F5270
Geo White

MAT



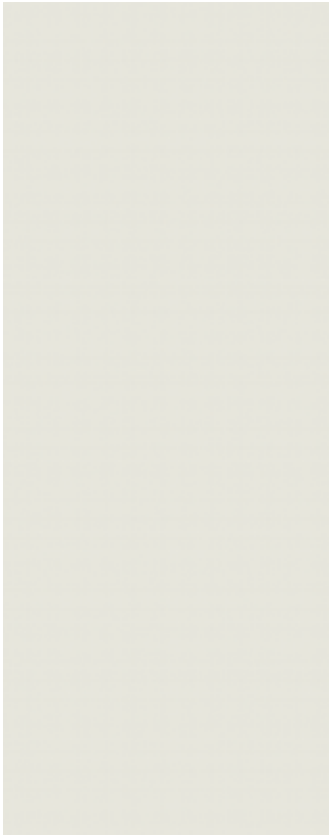
F5272
Geo Folkestone

MAT



F5273
Geo Citadel

MAT



F5281
Dogbone White

MAT



F5283
Dogbone Storm

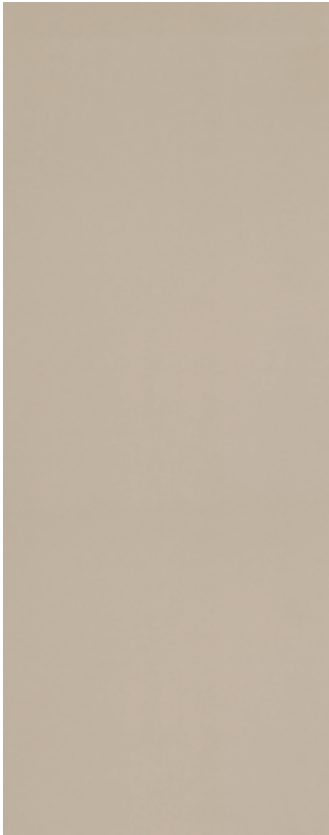
MAT

Full sheet layouts

Full sheet layouts displayed are shown at approx 1:28 scale and are representative of a 3050x1300mm sheet size



F7507
Folkestone Grafix MAT



F7517
Almond Grafix MAT



F7508
Mouse Grafix MAT



F7515
Graphite Grafix MAT



F1936
Lava Dust MAT



F1787
Grey Dust MAT



line

● F9535 Flint Plaid

Patterns

			Sheet size (mm)										
			3050x1300					2150x950	2350x950	2350x1300	3660x1525	3600x1400	
Code	Decor	LRV	Grade: HGP CGS	Grade: PAR PAR CGS	Grade: ATP ACS	Grade: HGS	Grade: HGS CGS	Grade: HGS CGS	Grade: HGS CGS	Grade: HGP CGS	Grade: HGP CGS	Grade: PAR PAR CGS	
F0193	Xenon	47.2	MAT	-	-	-	MAT	MAT	MAT	MAT	-	-	
F1787	Grey Dust	37.0	MAT	-	-	-	-	-	-	-	-	-	
F1936	Lava Dust	60.0	MAT	-	-	-	-	-	-	-	-	-	
F1994	Fox	42.4	MON*	-	-	-	-	-	-	-	MON	-	
F2255	Polar White	85.7	MON*	-	-	-	-	-	-	-	MON	-	
F3421	Bianca Luna	65.0	NDF	-	-	-	-	-	-	-	NDF	-	
F3457	Breccia Paradiso	23.1	-	AB	-	-	-	-	-	-	-	AB	
F3458	Travertine Silver	51.3	-	AB	-	-	-	-	-	-	-	AB	
F3460	Calacatta Marble	63.8	-	AB	-	-	-	-	-	-	-	AB	
F3476	Jet Sequoia	8.6	-	AB	-	-	-	-	-	-	-	AB	
F3708	Burnished Coin	18.0	ACO	-	-	-	-	-	-	-	-	-	
F3709	Burnished Iron	12.8	ACO	-	-	-	-	-	-	-	-	-	
F3734	Radon	18.7	MAT	-	-	-	MAT	MAT	MAT	MAT	-	-	
F3735	Krypton	35.3	MAT	-	-	-	MAT	MAT	MAT	-	-	-	
F4971	Natural Gray Felt	26.0	PPR*	-	-	-	-	-	-	-	-	-	
F5014	White Painted Marble	64.8	NDF	-	-	-	-	-	-	-	-	-	
F5015	Black Painted Marble	7.6	NDF	-	-	-	-	-	-	-	-	-	
F5018	Calacatta Cava	63.0	NDF	-	-	-	-	-	-	-	NDF	-	
F5270	Geo White	69.1	MAT	-	-	-	-	-	-	-	-	-	
F5272	Geo Folkestone	43.9	MAT	-	-	-	-	-	-	-	-	-	
F5273	Geo Citadel	16.4	MAT	-	-	-	-	-	-	-	-	-	
F5281	Dogbone White	71.5	MAT	-	-	-	-	-	-	-	-	-	
F5283	Dogbone Storm	11.0	MAT	-	-	-	-	-	-	-	-	-	
F5583	Steel Metal	22.9	MAT	-	-	-	MAT	MAT	MAT	-	-	-	
F5935	Purbeck Flint	16.3	ACO	-	-	-	-	-	-	-	-	-	
F5936	Lulworth Flint	21.9	ACO	-	-	-	-	-	-	-	-	-	
F6314	Neo Cloud	61.1	NDF	-	-	-	-	-	-	-	-	-	
F6315	Neo Cyclone	17.8	NDF	-	-	-	-	-	-	-	-	-	
F6316	Neo Tornado	26.3	NDF	-	-	-	-	-	-	-	-	-	
F6349	Frosted Pearl	78.2	-	-	GLS	-	-	-	-	-	-	-	
F6350	Frosted Dusk	43.5	-	-	GLS	-	-	-	-	-	-	-	
F6351	Frosted Copper	26.5	-	-	GLS	-	-	-	-	-	-	-	
F6352	Frosted Gold	49.5	-	-	GLS	-	-	-	-	-	-	-	
F6353	Frosted Jade	38.5	-	-	GLS	-	-	-	-	-	-	-	
F6362	Concrete Formwood	49.0	AHD	-	-	-	-	-	-	-	-	-	
F6363	Elemental Ash	53.0	AHD	-	-	-	-	-	-	-	-	-	
F6444	Clay Textile	42.1	PLX	-	-	-	-	-	-	-	-	-	
F6445	Greige Textile	38.9	PLX	-	-	-	-	-	-	-	-	-	
F6446	Charcoal Textile	18.3	PLX	-	-	-	-	-	-	-	-	-	
F6698	Paloma Polar	72.9	MAT	-	-	-	-	-	-	-	-	-	
F6724	Paloma Folkestone	51.8	MAT	-	-	-	-	-	-	-	-	-	
F6728	Paloma Jade	49.7	MAT	-	-	-	-	-	-	-	-	-	
F6943	VirrVarr White	63.6	MAT	-	-	-	-	-	-	-	-	-	

* Only available in HGP

Patterns

			Sheet size (mm)									
			3050x1300				2150x950	2350x950	2350x1300	3660x1525	3600x1400	
Code	Decor	LRV	Grade: HGP CGS	Grade: PAR PAR CGS	Grade: ATP ACS	Grade: HGS	Grade: HGS CGS	Grade: HGS CGS	Grade: HGS CGS	Grade: HGP CGS	Grade: HGP CGS	Grade: PAR PAR CGS
F6944	VirrVarr Blue	32.9	MAT	-	-	-	-	-	-	-	-	-
F6945	VirrVarr Black	16.7	MAT	-	-	-	-	-	-	-	-	-
F7106	Oxide Brush	11.0	MAT	-	-	-	-	-	-	-	-	-
F7107	Comet Brush	19.3	MAT	-	-	-	-	-	-	-	-	-
F7108	Saturn Brush	11.2	MAT	-	-	-	-	-	-	-	-	-
F7402	Pietra Grafite	53.7	NDF	-	-	-	-	-	-	-	NDF	-
F7403	Nero Marquina	10.0	NDF	-	-	-	-	-	-	-	NDF	-
F7507	Folkestone Grafix	53.7	MAT	-	-	-	-	-	-	-	-	-
F7508	Mouse Grafix	30.0	MAT	-	-	-	-	-	-	-	-	-
F7515	Graphite Grafix	11.9	MAT	-	-	-	-	-	-	-	-	-
F7517	Almond Grafix	62.3	MAT	-	-	-	-	-	-	-	-	-
F7837	Graphite	10.8	MON*	-	-	-	-	-	-	-	MON	-
F7923	Surf	69.4	MON*	-	-	-	-	-	-	-	MON	-
F7927	Folkestone	53.5	MON*	-	-	-	-	-	-	-	MON	-
F8372	Grey Chip	20.6	NDF	-	-	-	-	-	-	-	-	-
F8381	Spectra Chip	58.0	NDF	-	-	-	-	-	-	-	-	-
F8382	White Chip	62.4	NDF	-	-	-	-	-	-	-	-	-
F8387	Black Chip	11.7	NDF	-	-	-	-	-	-	-	-	-
F8678	Starched Paperfold	66.5	PPR*	-	-	-	-	-	-	-	-	-
F8681	Cotton Cloth	68.8	PLX	-	-	-	-	-	-	-	-	-
F8682	Woolen Cloth	44.0	PLX	-	-	-	-	-	-	-	-	-
F8793	Green Slate	18.5	MON*	-	-	-	-	-	-	-	MON	-
F8812	Tinted Paper Terrazzo	41.7	-	-	-	PPR	-	-	-	-	-	-
F8813	Tonal Paper Terrazzo	6.6	-	-	-	PPR	-	-	-	-	-	-
F8826	Neutral Twill	58.8	PLX	-	-	-	-	-	-	-	-	-
F8827	Sarum Twill	35.1	MAT/ PLX	-	-	-	-	-	-	MAT	-	-
F8829	Graphite Twill	11.3	PLX	-	-	-	-	-	-	-	-	-
F8830	Elemental Concrete	38.5	AHD	-	-	-	-	-	-	-	-	-
F8832	Elemental Corten	13.8	AHD	-	-	-	-	-	-	-	-	-
F8833	Elemental Graphite	13.2	AHD	-	-	-	-	-	-	-	-	-
F8837	Brushed Zinc	37.0	MAT	-	-	-	-	-	-	-	-	-
F8859	Vintage Brush	25.0	MAT	-	-	-	MAT	MAT	MAT	-	-	-
F8917	Rolled Steel	10.1	MAT	-	-	-	-	-	-	-	-	-
F8918	Blackened Steel	8.8	MAT	-	-	-	-	-	-	-	-	-
F9271	Reclaimed Denim Fiber	7.7	PLX*	-	-	-	-	-	-	-	-	-
F9482	Marbled Cappuccino	12.8	-	AB	-	-	-	-	-	-	-	AB
F9483	Ferro Grafite	13.8	NDF	-	-	-	-	-	-	-	NDF	-
F9485	Nero Grafite	8.1	NDF	-	-	-	-	-	-	-	NDF	-
F9510	Layered Black Sand	7.9	ACO	-	-	-	-	-	-	-	-	-
F9511	Layered Sand	62.8	ACO	-	-	-	-	-	-	-	-	-
F9535	Flint Plaid	16.1	PLX	-	-	-	-	-	-	-	-	-
F9684	Natural Recycled Kraft	31.3	ESC*	-	-	-	-	-	-	-	-	-
F9685	Black Recycled Kraft	10.3	ESC*	-	-	-	-	-	-	-	-	-

* Only available in HGP

Product grades, finishes and accreditations.

This Collection incorporates the following grades of decorative laminate each with its own performance characteristics.
These grades conform to EN438.



Formica® Laminate

Sheets (thin) consisting of layers of wood-based fibers impregnated with thermosetting resins and a surface decor on one side

Grade: **HPL/EN438-3 HGP:** Horizontal, General Purpose, Postforming high pressure decorative laminate
HPL/EN438-3 HGS: Horizontal, General Purpose, Standard high pressure decorative laminate
HPL/EN 438-8 ATP: Pearlescent, Gloss, Light Duty, Postforming high pressure decorative laminate

Thickness: 0.7mm / 1.2mm Gloss (Frosted series), single sided

Additional flame retardant grades are available on request (please check for available options)

The RAW series of reclaimed decor papers use small-batch craft production; therefore, each sheet is unique and natural



Formica® Compact

Sheets (thick) consisting of layers of wood-based fibers impregnated with thermosetting resins and surface decor on one or both sides

Grade: **HPL/EN438-4 CGS:** Compact, General Purpose, Standard high pressure decorative laminate
HPL/EN 438-8 ACS: Pearlescent, Gloss, Light Duty, Compact, Standard high pressure decorative laminate

Thickness: Single sided 2, 2.5, 3 mm / Double sided 4, 6, 8, 10, 12, 13, 16, 18, 20 mm

Additional flame retardant grades are available on request (please check for available options)



AR Plus® by Formica Group

Durable high gloss laminate, with increased surface performance, highly resistant to scuffs and mar abrasions

Grade: **PAR:** Abrasion-resistant, High-gloss, Postforming high pressure laminate

Thickness: 1.2 mm, single sided

Additional flame retardant grades are available on request (please check for available options)

PAR grade classification does not appear in the EN438 grade classification system



AR Plus® Compact by Formica Group

Sheets consisting of layers of wood-based fibers impregnated with thermosetting resins and a high gloss surface finish on one or both sides

Grade: **PAR CGS:** Abrasion-resistant, High-gloss, Compact, General Purpose, Standard high pressure decorative laminate

Thickness: Single sided 2, 2.5, 3 mm / Double sided 4, 6, 8, 10, 12, 13, 16 mm

Additional flame retardant grades are available on request (please check for available options)

PAR CGS grade classification does not appear in the EN438 grade classification system

Product data sheets, including applicable fire rating, can be accessed on formica.info

Available surface finishes and recommended applications

Surface Finish Description	Surface Finish Designation	Code	Recommended applications	
			Horizontal (& Vertical), General purpose	Vertical and Light-duty horizontal
AR Plus®	AB	AB	•	
Arcosa	ACO	AC	•	
Essence	ESC	ES	•	
Gloss	GLS	90		•
Honed	AHD	77	•	
Matte 58	MAT	58	•	
Monolith	MON	ML	•	
Paper	PPR	PA	•	
Plex	PLX	PX	•	
Satin NDF	NDF	11	•	

• F3708 Burnished Coin



NCS and RAL references

Code	Decor	NCS®	RAL Classic
F1994	Fox	S 3500-N	7004
F2255	Polar White	S 0500-N	9016
F7837	Graphite	S 8000-N	7022, 8019
F7923	Surf	S 1502-Y	9002
F7927	Folkestone	S 2500-N	7035
F8793	Green Slate	S 6005-G20Y	7009

General

The information given in this brochure is correct at the time of publication. However, as we have a policy of constant product development and improvement, product specifications may change in the future. Visit formica.com, or formica.info for technical data, as the most up-to-date source of information. Not all certifications stated are applicable or available for all Formica® products. Please check that the product you require is covered by a relevant certification or is suitable for your specific application, in advance of order placement.

Colour system notations

NCS® and RAL Classic notations represent the closest match available in the particular system.

They may or may not be exact and are provided for guidance only. NCS and RAL Classic notations provided have been established from a standard matt laminate sample. Please note that different surface finishes (texture structure and gloss levels) can have an effect on colour perception. When exact colour information is required, or for cross-material matching (HPL to other materials), please always refer to an actual laminate sample in the specified finish.

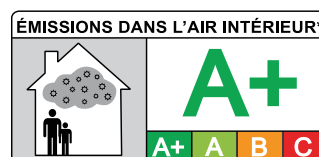
Light Reflectance Value

Light Reflectance Value (LRV) is a value indicating the proportion of light reflected by a colour, when measured under standard daylight conditions. This guidance uses a scale of 0-100, where 0 = black and therefore total light absorption, whereas

white = 100 and therefore total light reflection. The main purpose of this value is to indicate measured colour contrast between two surfaces, which need to be readily distinguishable within an environment (under static conditions, a difference of 30 units between two colours is considered adequate). LRVs stated may or may not be exact and are provided for guidance only.

Please note

For non-solid colour decors, where there are multiple colours across the design, the stated LRV is an average value taken from multiple measurements across the decor and must be used with caution. The individual colours in a pattern, woodgrain or stone design can differ more than 30 LRV units within the design itself.



Disclaimer

General

The information provided by Formica Group ("Formica") in this document is solely indicative. The information given in this brochure is correct at the time of publication. However, as we have a policy of constant product development and improvement, product specifications may change in the future. Visit formica.com, or formica.info for technical data, as the most up-to-date source of information. Formica does not warrant that the information in this document is suitable for your specific purpose. Colour system notations represent the closest match available in the particular system. They may or may not be exact and are provided for guidance only. When exact colour information is required, please always refer to an actual laminate sample in the specified finish.

Liability

Formica is not liable (neither contractual nor non-contractual) for any damage arising from or related to the use of this document, except if and to the extent that such damage is the result of wilful misconduct or gross negligence on the part of Formica and/or its management. The limitation of liability applies to all parties affiliated with Formica, including but not limited to its officers, directors, employees, affiliated enterprises, suppliers, distributors, agents and representatives.

General Conditions

All sales of Formica® brand products are governed by the Formica General Terms and Conditions of Sale in effect at the time of sale and contained in every order acknowledgement and are available upon request.

Intellectual Property

All intellectual property rights and other rights regarding the content of this document (including logos, marks, text and photographs) are owned by Formica Group and/or its licensors.

Formica, the Formica Anvil Device and AR Plus are registered trademarks of The Diller Corporation.
© 2024 The Diller Corporation

MIGUEL ANGEL JIMENEZ VILLARREAL

SALES & PROJECT MANAGER

☎ 812264-2061
☎ 812322-9026
✉ miguel.jimenez@laminadosnacionales.com
🌐 www.laminadosnacionales.com
f www.facebook.com/laminadosnacionales
INTERNATIONAL: US Direct +52 1 8123229026



www.formica.com.mx
www.laminadosnacionales.com